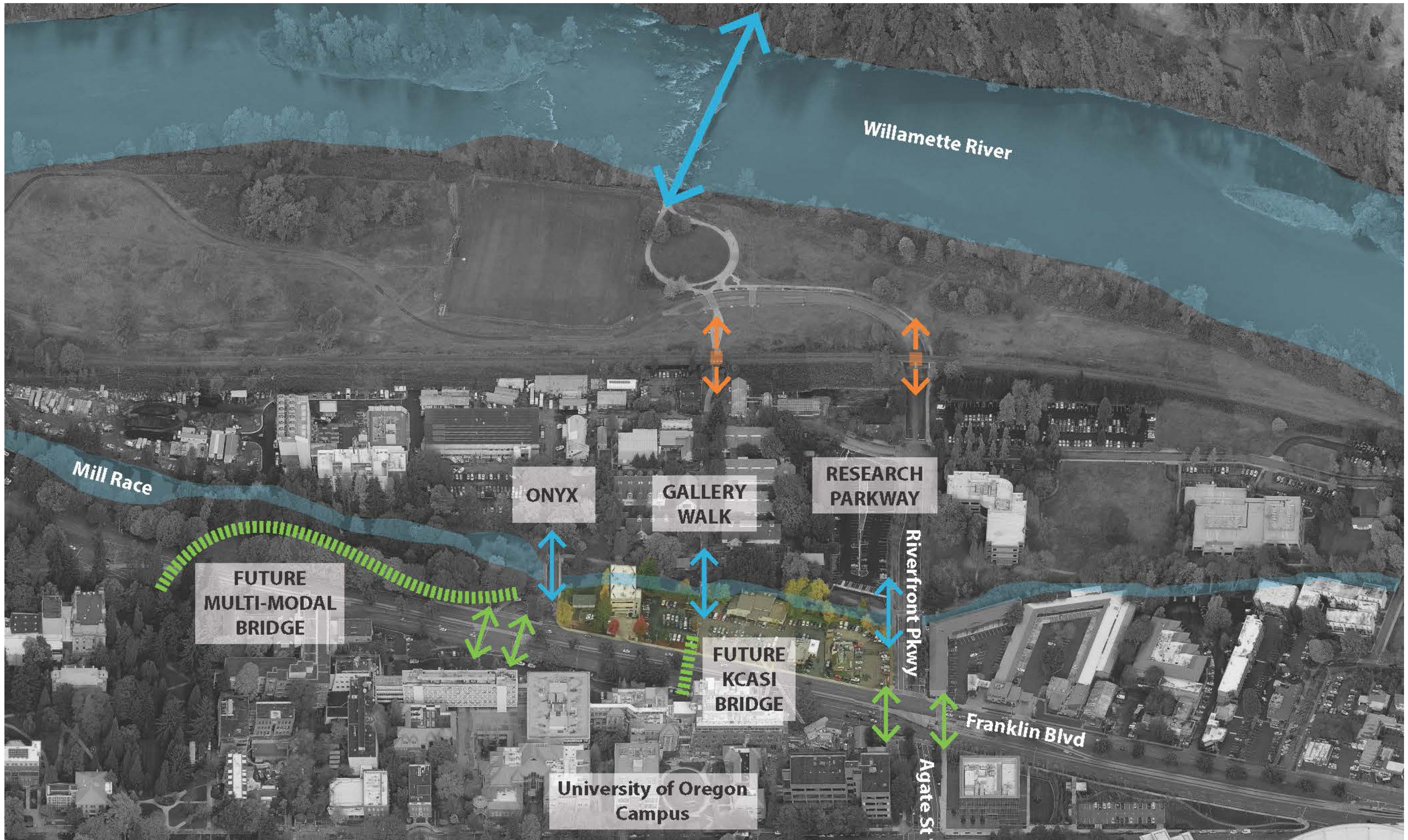




CLIMATE CHANGE IS A WATER STORY. Restoration of former industrial waterway with inviting, educational, recreational, and therapeutic qualities for local and global visitors.
Photo Credit: PLACE



ACADEMIA & STEWARDSHIP. Funded by an extraordinary donation, the Knight Campus' mission is to accelerate the timeline between discovery and deployment of scientific innovations, encouraging interaction and collaboration across disciplines.
Photo Credit: PLACE



TRANSFORMATION. With a focus on health and environment, the University of Oregon is rolling out a new research center and connecting with the Eugene's main campus Lewis Integrative Science Building.
Photo Credit: PLACE



NATURE/SCIENCE/RESEARCH. Bringing brilliant minds together to make a leap, the Knight Campus revolutionizes the way students learn and train, offering fresh approaches to technical training, scientific communication, and entrepreneurship.

Photo Credit: PLACE



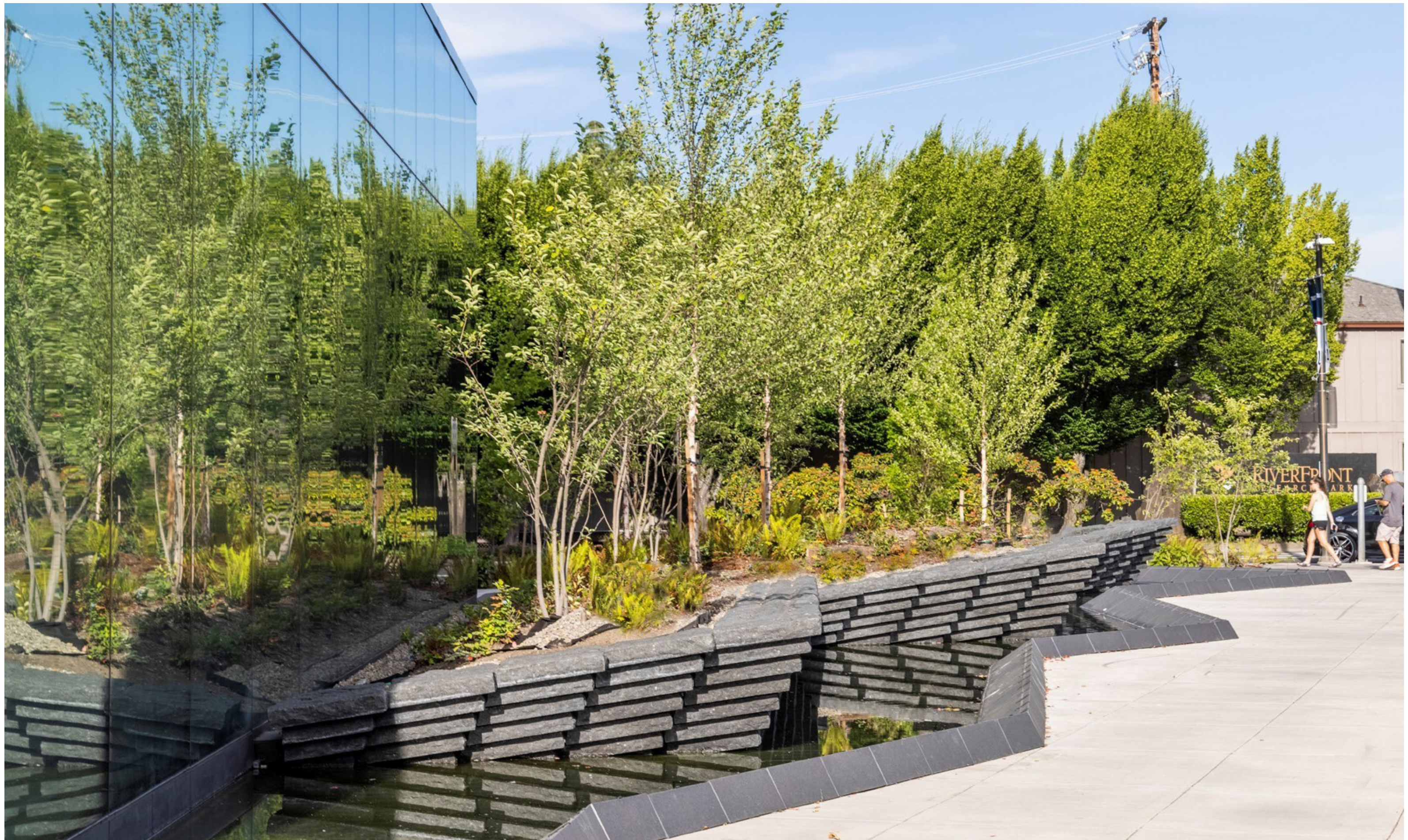
DISCOVERY. The Knight Campus is the first laboratory building in the United States to be built partially with mass timber designed to accelerate the cycle of moving discoveries to impacts for the greater good.

Photo Credit: Bruce Damonte



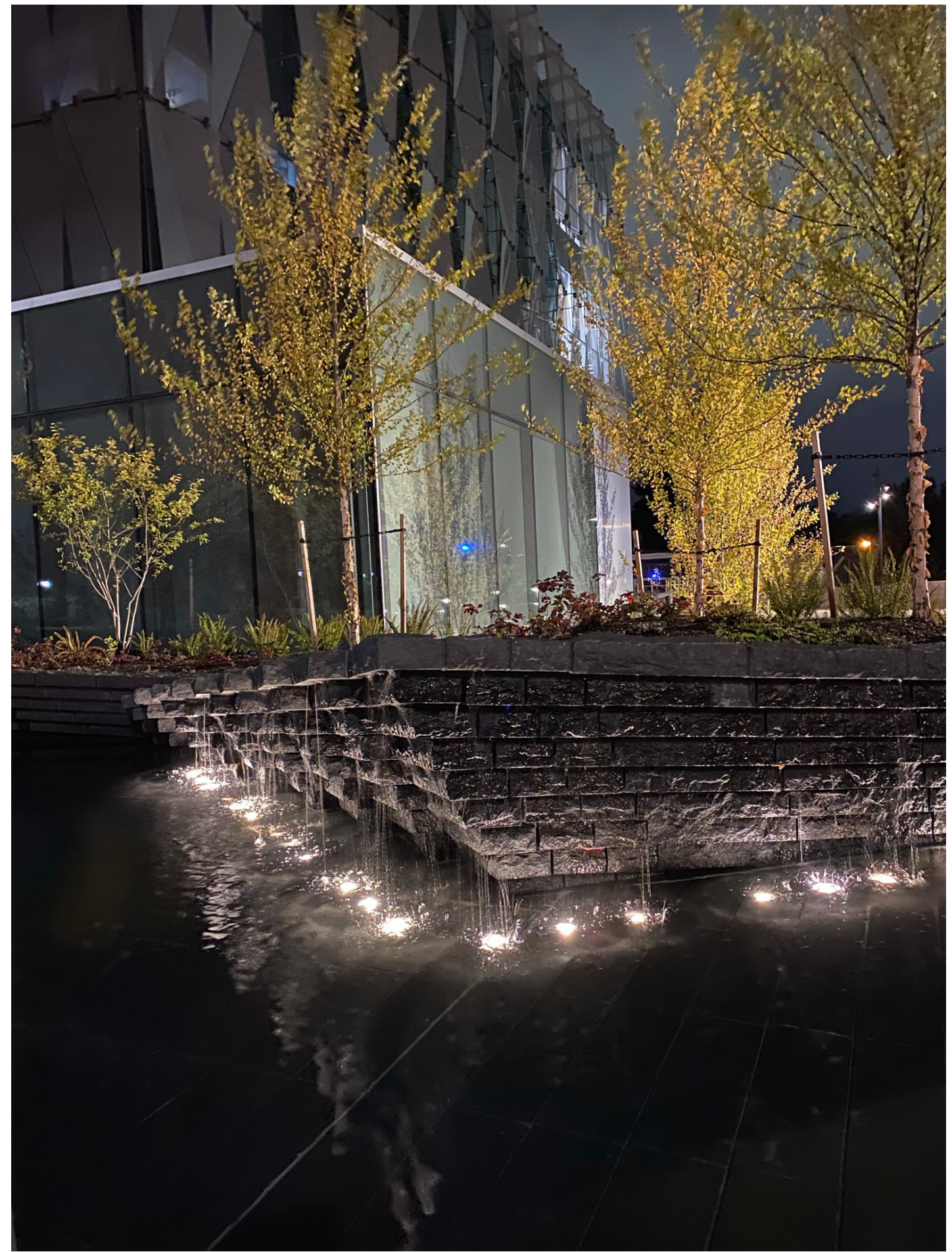
COMMON GROUND. From the glass exterior to the functional interior design to the unique elements celebrating Oregon's green ethos, the campus is a best-in-class research and education facility, an icon for the university, the community, and the state.

Photo Credit: Jeff Caven



LIFE. Representing the headwaters of the nearby McKenzie River, the Source features dark granite visible from Franklin Boulevard gently welcoming in the visitor as water flows from the corner to the main building entrance.

Photo Credit: PLACE



HARMONY. Envisioned as an extension of the Millrace's riparian corridor along the Knight Campus' northern edge, natural setting wraps the building, providing a layer of transition to sublime and immersive oasis.

Photo Credit: Bruce Damonte



CONNECTOR. Eugene's earliest European settlers built the Millrace in the mid-19th century to spin waterwheels to power the city's first industrial development and the home of world's future breakthroughs.

Photo Credit: Bruce Damonte



RESTORATION. Removal of sediment, placement of bridges, and alterations to the waterway's path to enhance fish habitat and reduce water temperature bracing it with logs, root wads, boulders, and enhancing it with native riparian plantings.

Photo Credit: Bruce Damonte



TRANQUILITY. storm water runoff, as well as water from the Millrace, is cleansed in rain gardens and a water feature on the north side of the building as it cascades through a series of weirs back to the Millrace, improving water quality and oxygenation.

Photo Credit: Bruce Damonte



SENSORIUM. An Oregon model for sustainable development, the site is restored for the benefit of the larger ecosystem and enrichment of the UO campus while providing opportunities for human engagement with the landscape.

Photo Credit: Bruce Damonte



EQUITY. The KCASI supports a workplace that fosters social equity, occupant health, and inspiration to support the highest quality of research.
Photo Credit: Bruce Damonte



TRANSPARENCY. The University of Oregon's Phil and Penny Knight Campus for Accelerating Scientific Impact encourages innovation through teamwork and transparency.
Photo Credit: Bruce Damonte