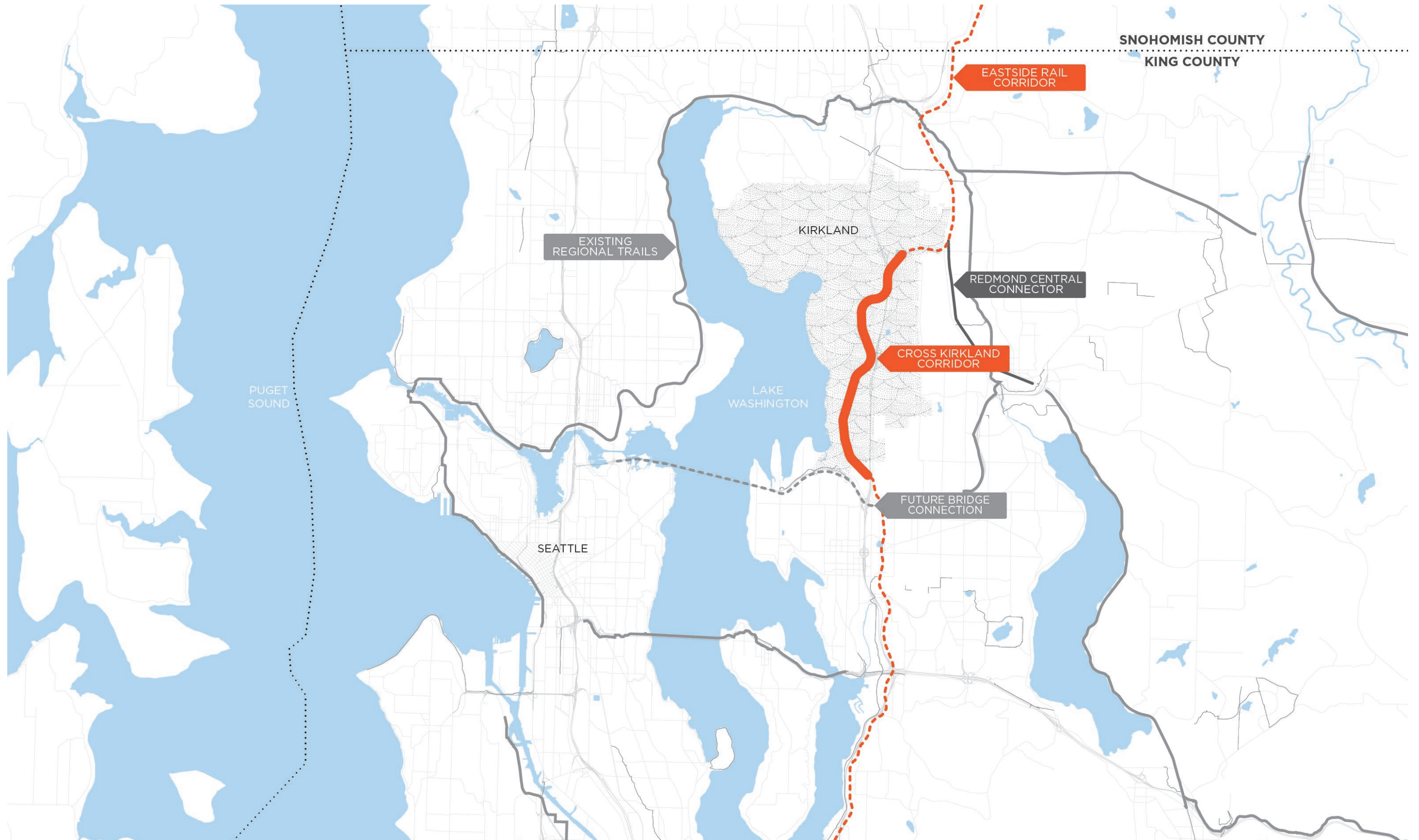




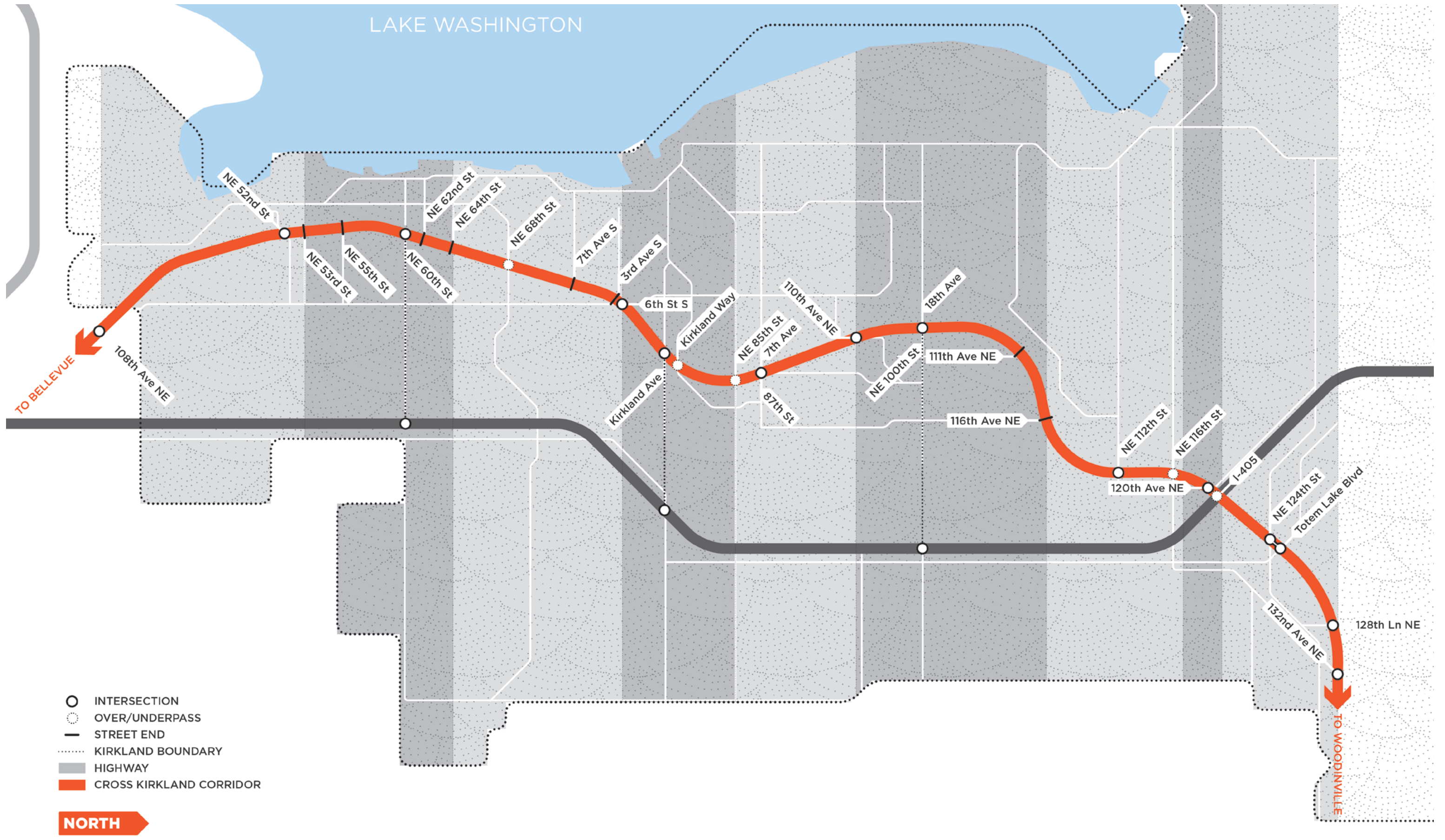
A NEW CIVIC INFRASTRUCTURE

The Cross Kirkland Corridor Master Plan transforms a defunct rail line into a world-class amenity, forging a connection through the heart of an evolving region with a series of public places directly reflecting the community.



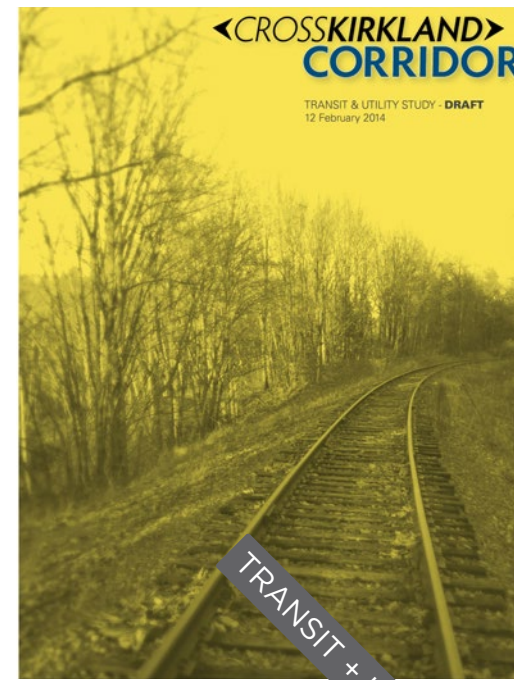
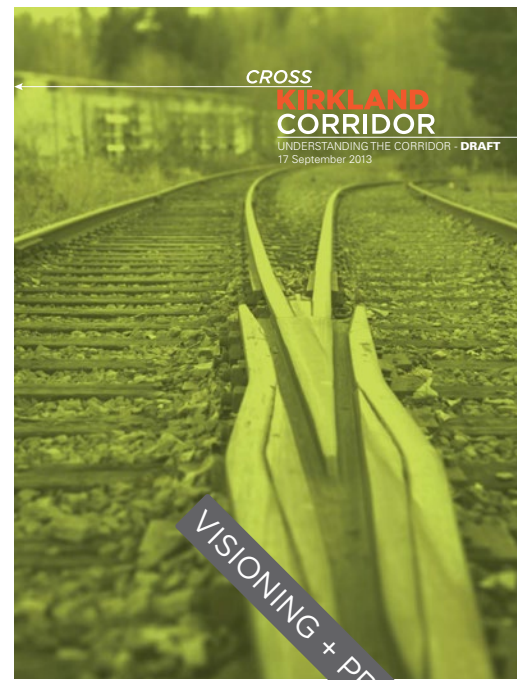
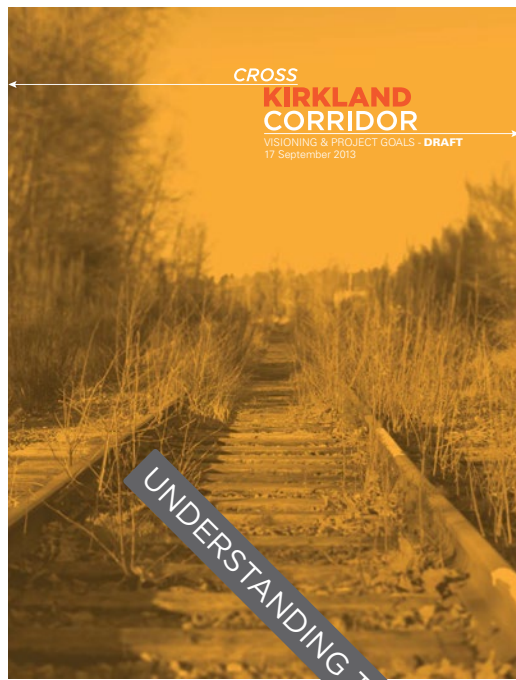
REGIONAL CONNECTIONS

Representing 5.8 miles of the greater, 43-mile Eastside Rail Corridor, the CKC delivers the critical first link in connecting Eastside communities with alternate transit options and recreation opportunities.



CROSSING KIRKLAND

Nearly six miles long, the proposed CKC traverses the heart of Kirkland, Washington, and stitches together diverse neighborhoods and landscape conditions with sensitive interventions that are rooted in place.



CITY VISION
 BUSINESS ROUNDTABLE
 WALK + ROLL
 COMMUNITY PLANNING

UNDERSTANDING THE CORRIDOR
 VISIONING + PROJECT GOALS
 COMMUNITY PLANNING
 TRANSPORT COMM

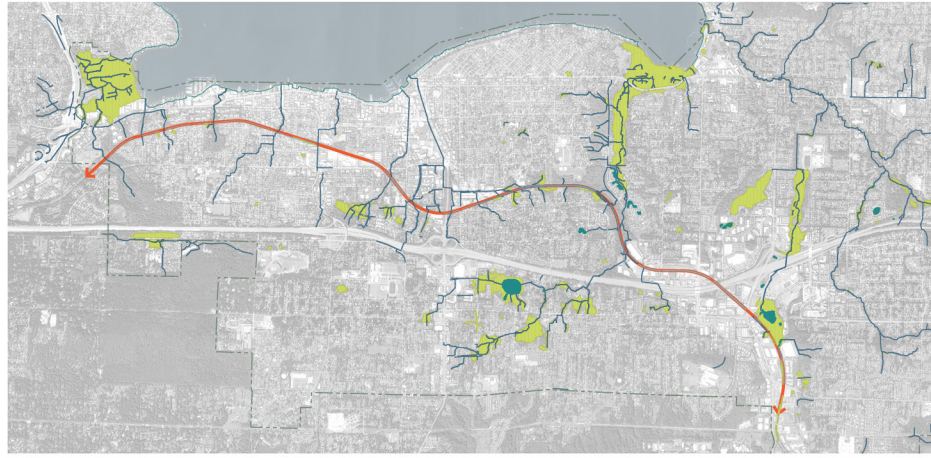
TRANSIT + UTILITY STUDY
 EXPERIENCE + ECOLOGY
 CORRIDOR FUNCTION
 SITE-SPECIFIC LAYOUT
 CHARACTER ZONE
 REALIZING THE VISION
 CKC MASTERPLAN
 COMMUNITY FORUM
 CITY COUNCIL
 COMMUNITY FORUM



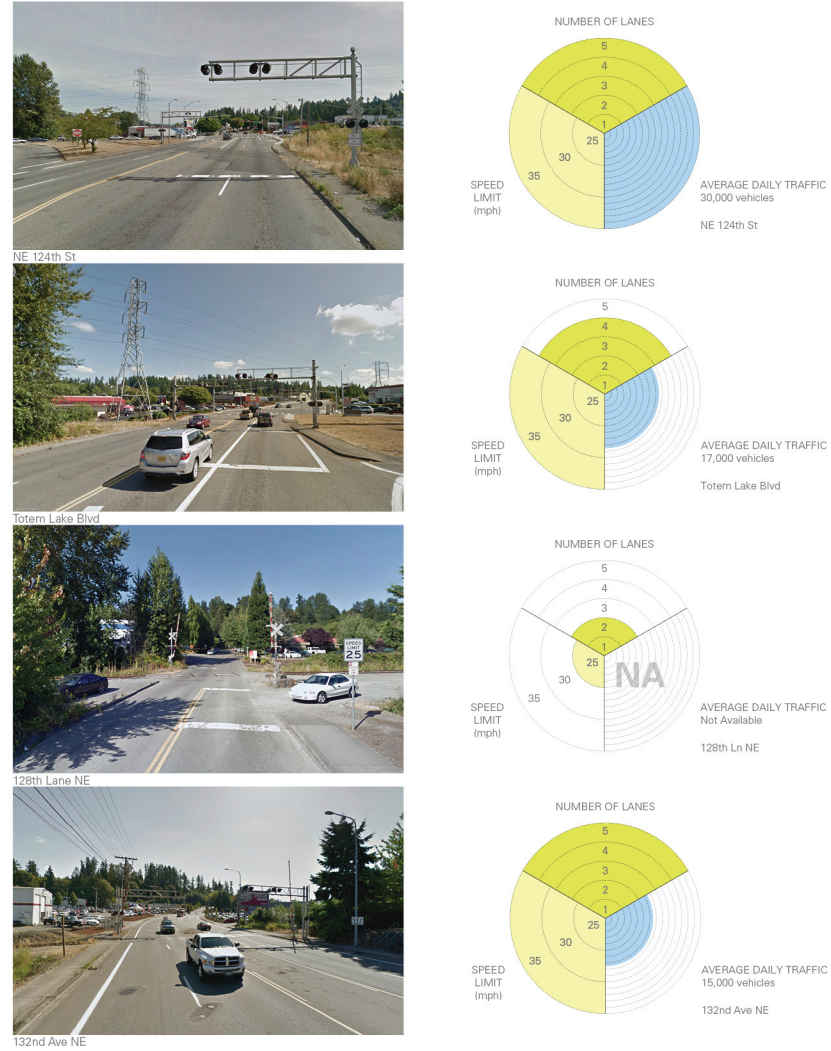
PROCESS + COMMUNITY

The plan balances expertise in analyzing technical issues (site ecologies, utilities, transportation and safety issues) and engaging communities in understanding priorities, stories, observations, history and character resulting in a master plan that is both technically and culturally rooted.

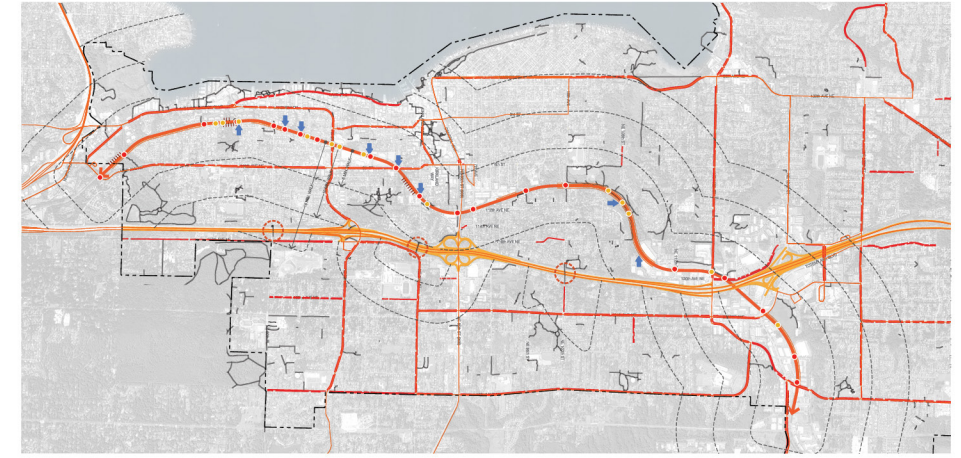
HYDROLOGY



INTERSECTION STUDIES



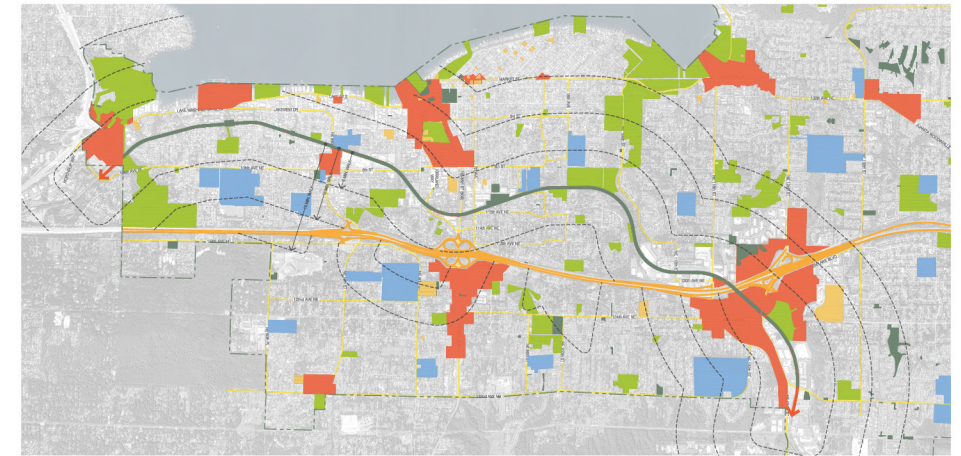
URBAN FORM CONNECTIONS



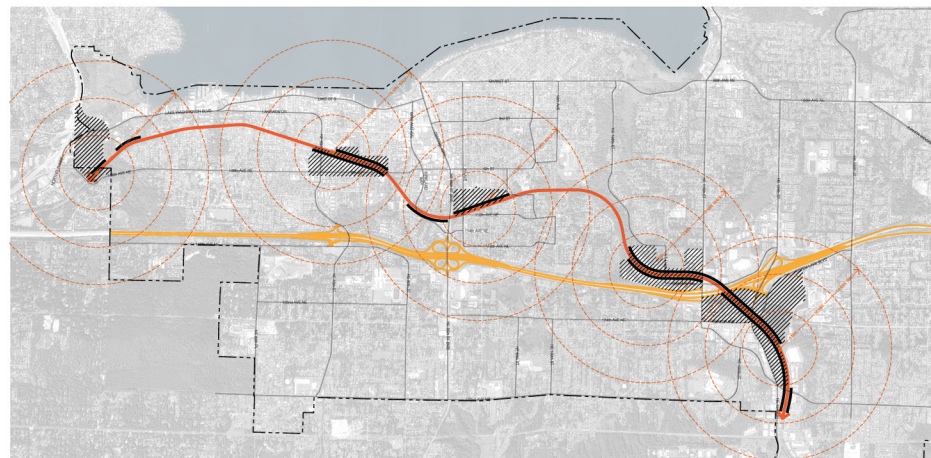
VEGETATION + VIEWS



CULTURAL CONNECTIONS



OPPORTUNITY ZONES



RESULTANT GOALS

01: CONNECT KIRKLAND



02: SHAPE A PLACE UNIQUE TO KIRKLAND



03: FOSTER A GREENER KIRKLAND

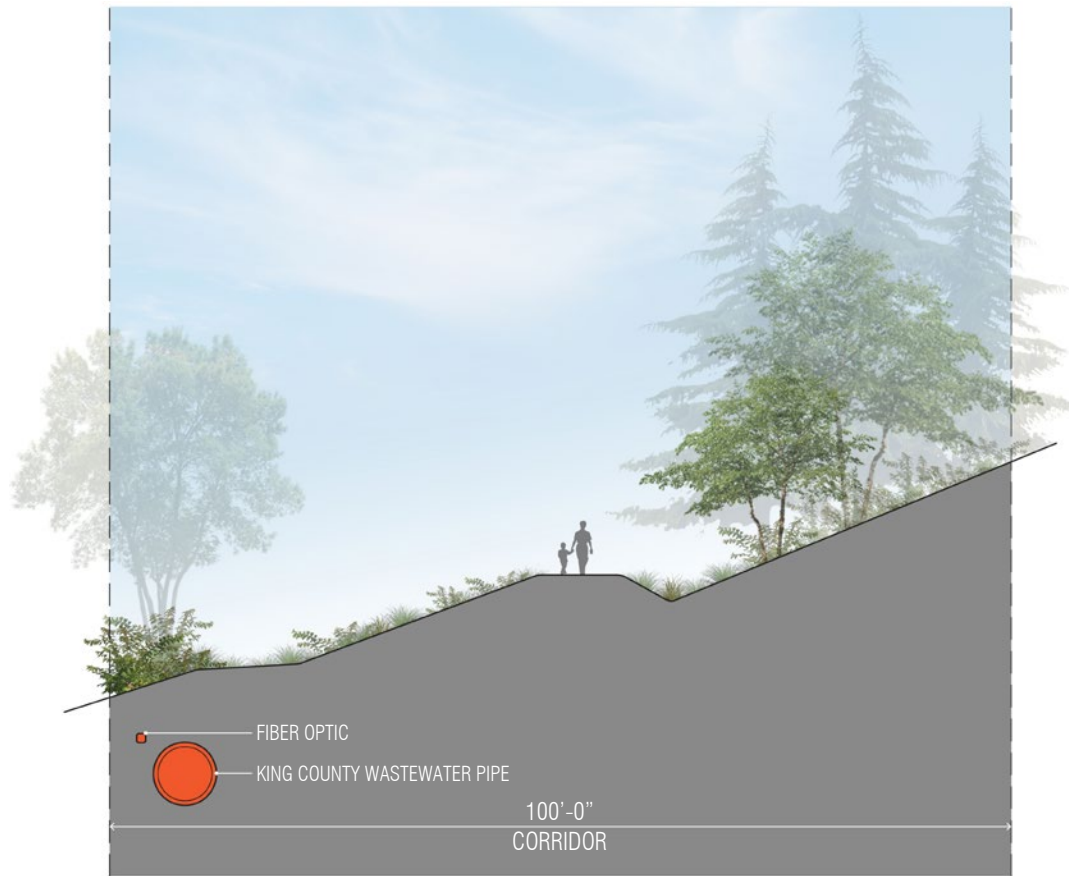


04: ACTIVATE KIRKLAND AND EVOLVE WITH TIME

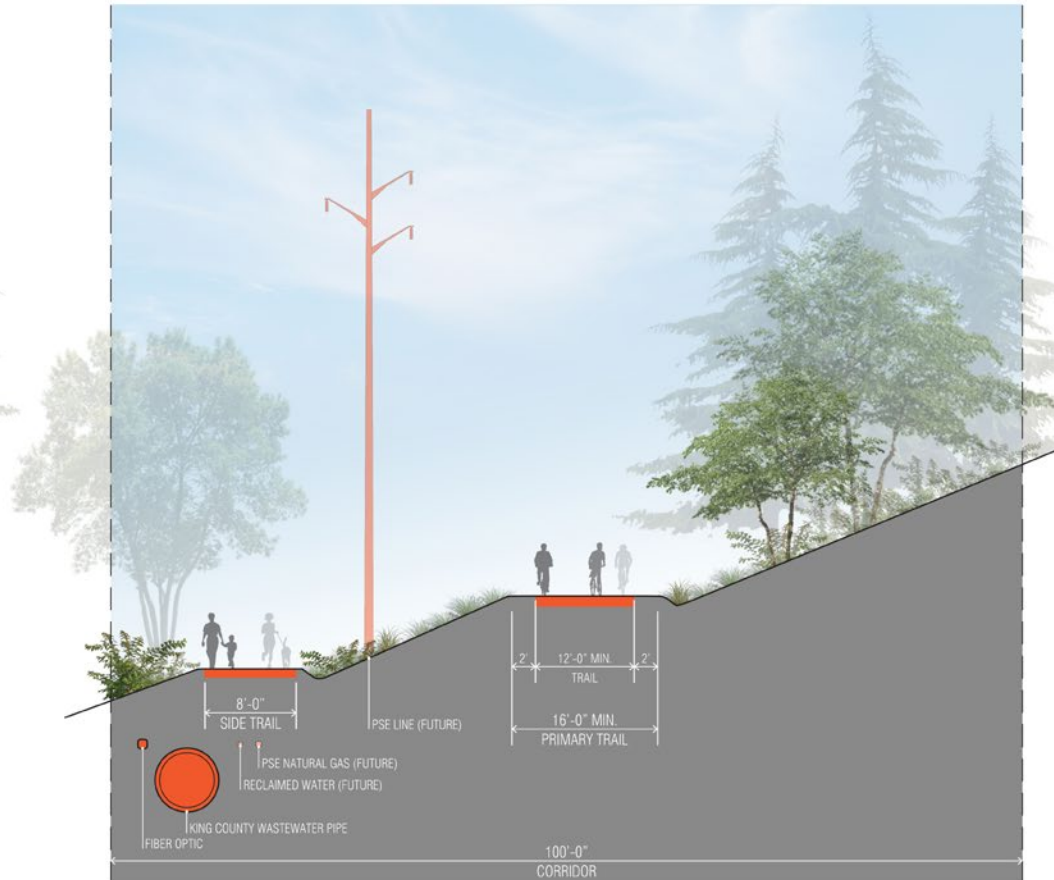


KEY ANALYSIS + GOALS

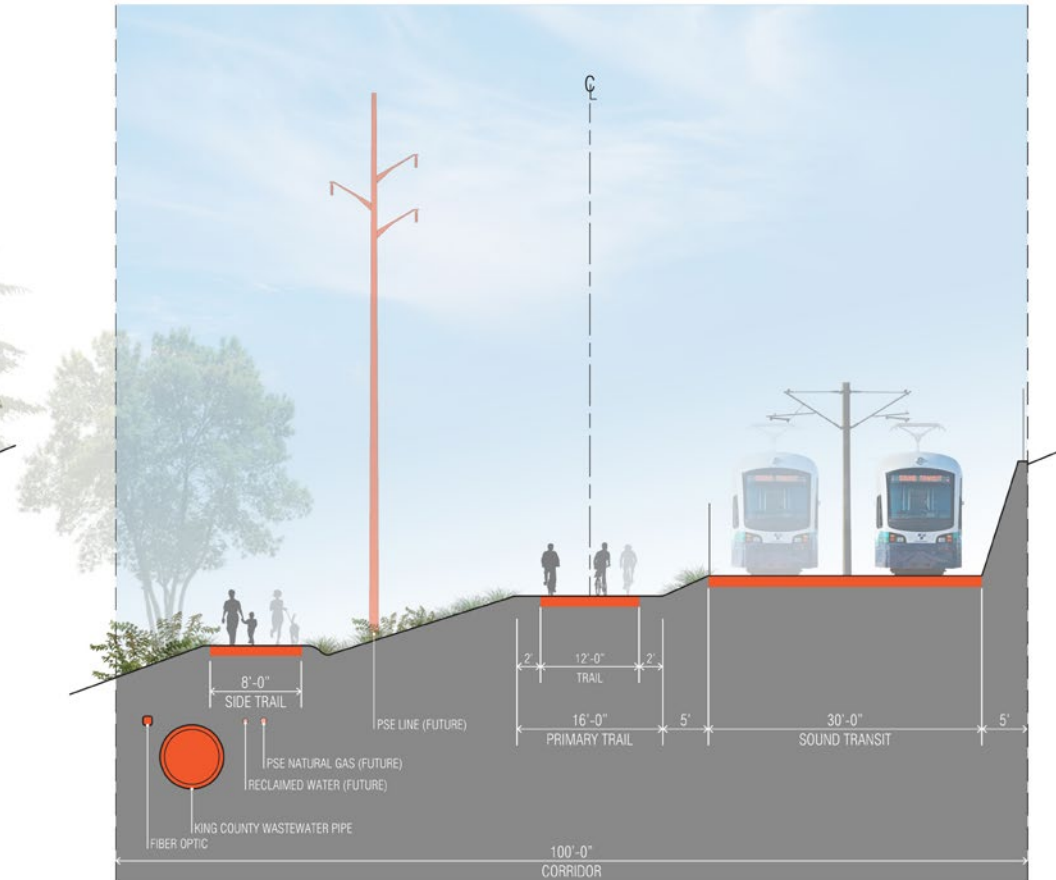
Intensive analysis built a thorough understanding of the physical and regulatory conditions of the site while project goals formalized both research and public involvement to provide metrics for all proposed interventions.



INTERIM TRAIL



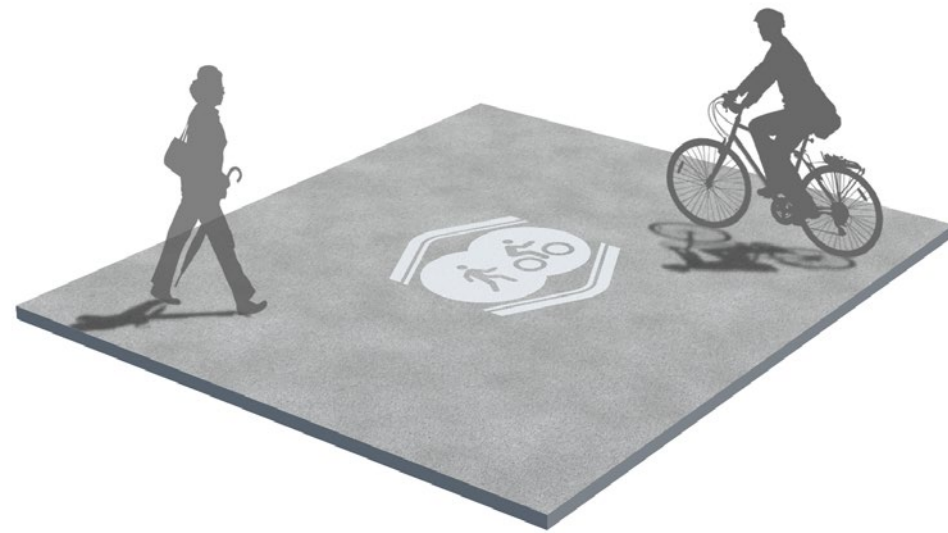
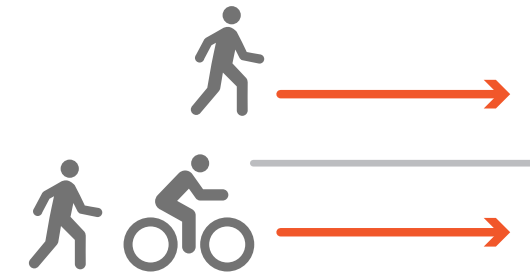
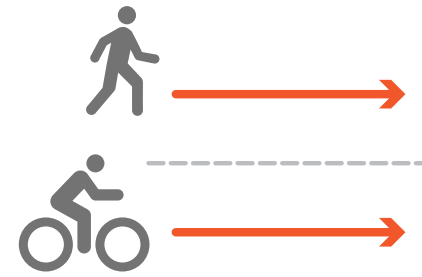
NEAR TERM



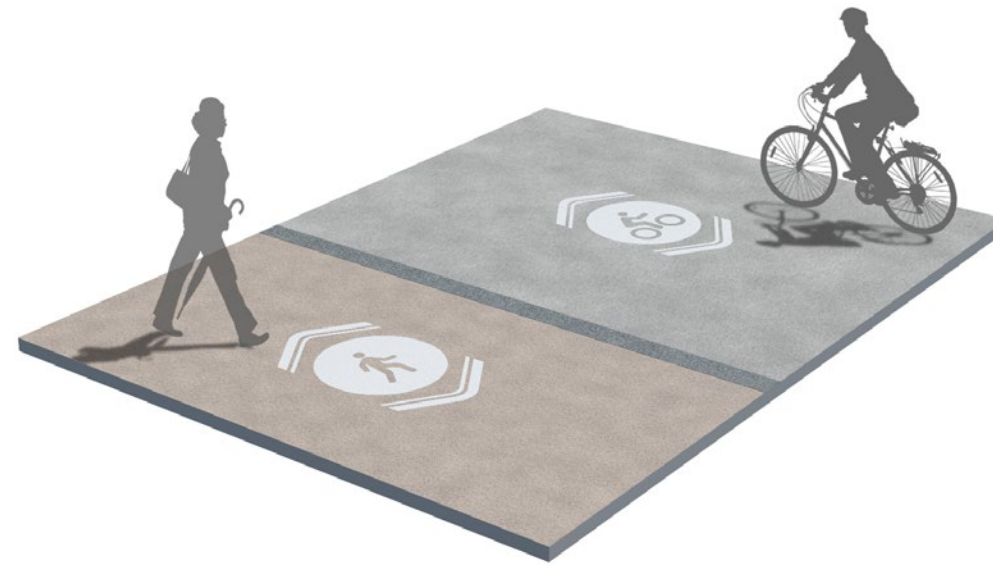
LONG TERM WITH TRANSIT

CLEAR VISION + FLEXIBLE FUTURES

The vision of the CKC takes the long view. Design interventions are presented as phased components that provide clear, near-term direction but allow for future contingencies such as utility integration and the accommodation of high-capacity transit.



PRIMARY TRAIL



THE TRAIL EVOLVES: DIVIDED TRAIL

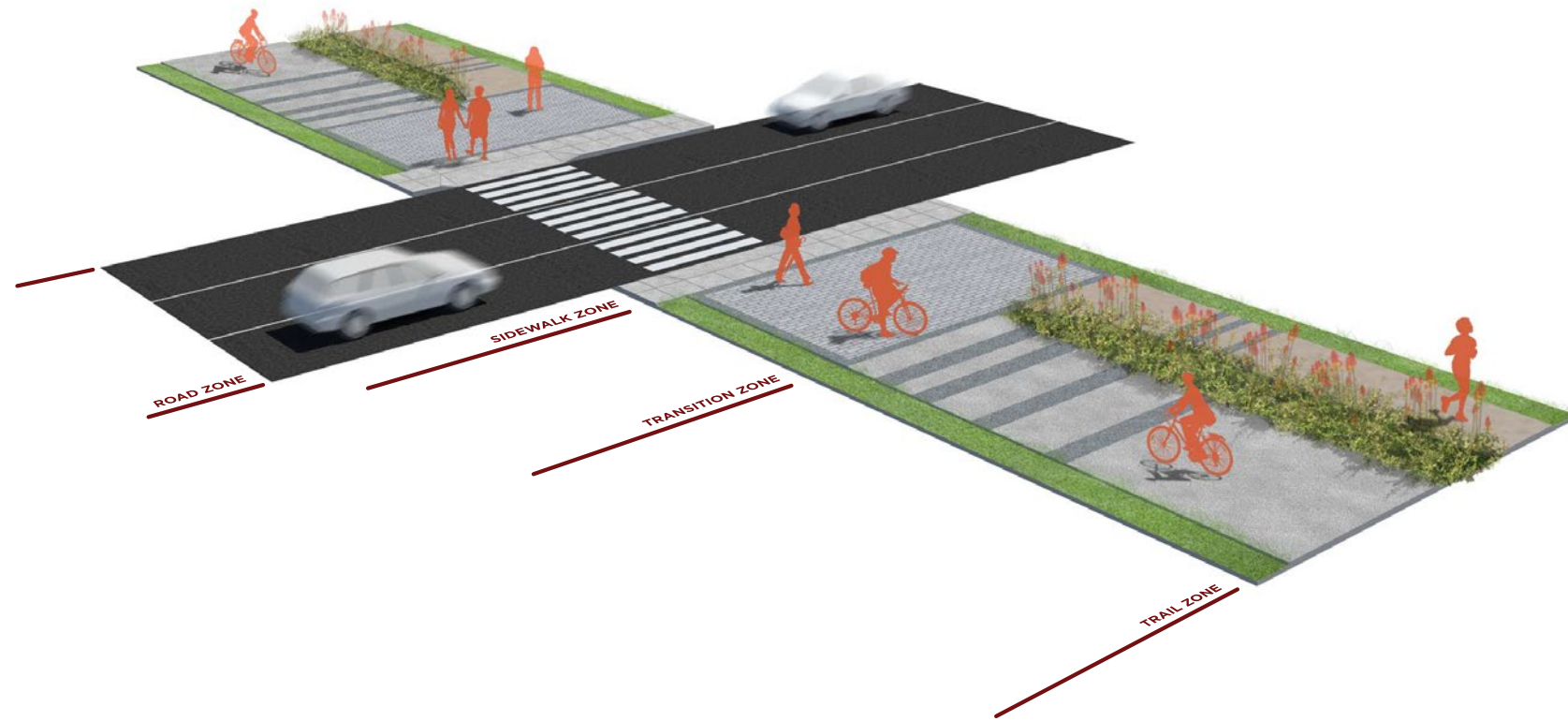
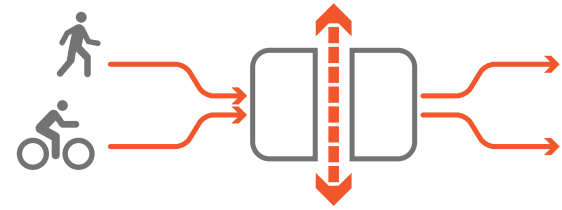


SIDE TRAIL + UTILIZING GRADE

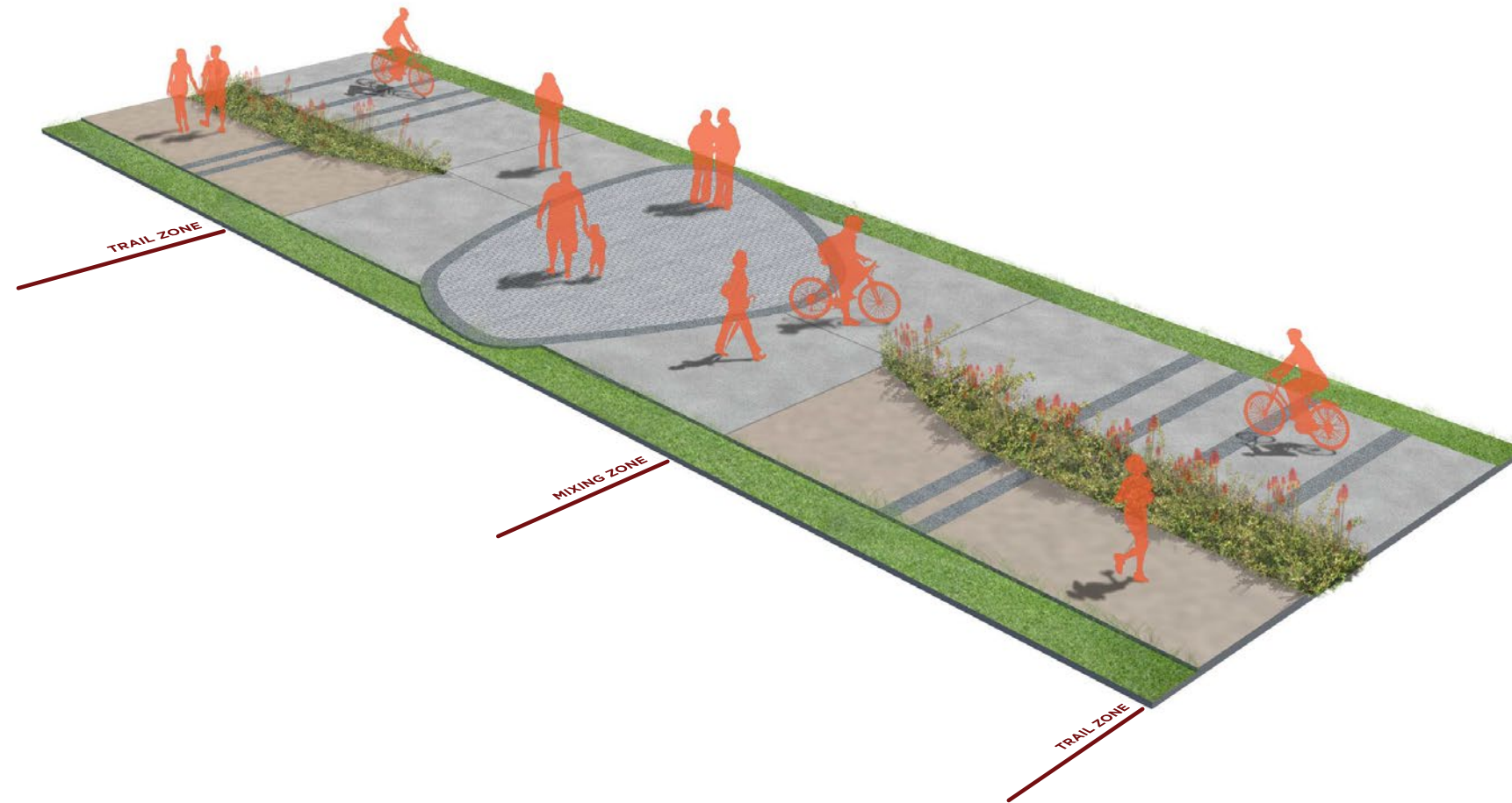
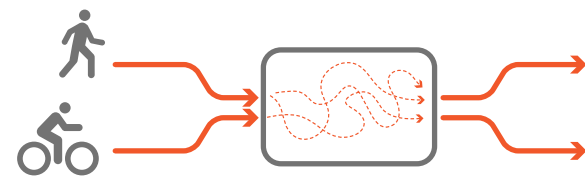
FUNCTIONAL KIT OF PARTS

Varied trail profiles offer circulation options throughout CKC Character Zones and the flexibility for phased development as traffic volumes increase.

PROTOTYPICAL INTERSECTIONS



MIXING ZONES



FUNCTIONAL KIT OF PARTS

Strategic, consistent use of design elements intuitively alerts, slows, and focuses the attention of cyclists and pedestrians at all points of potential conflict, from vehicular crossings to trail mixing zones.



CHARACTER ZONES

The plan identifies eight character zones associated with neighborhoods, environmental conditions and cultural influences. Each zone's unique assets are leveraged, developing a unified experience while remaining deferential to the rich, diverse qualities of the neighborhoods the CKC traverses.

URBAN / NATURAL

CORRIDOR / PLACE

SLOW / FAST

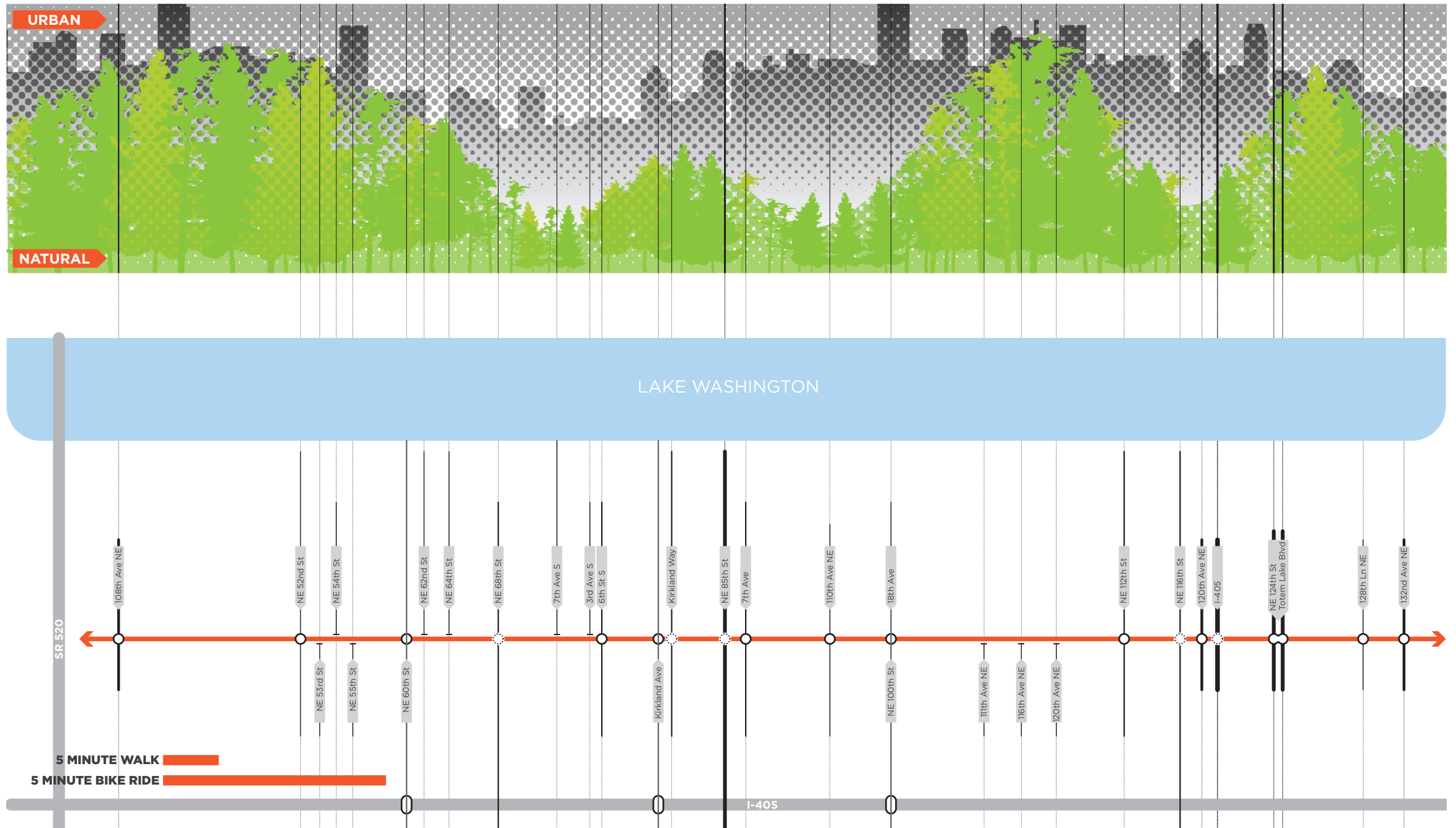
STOP / GO

NEW / OLD

OPEN / CLOSED

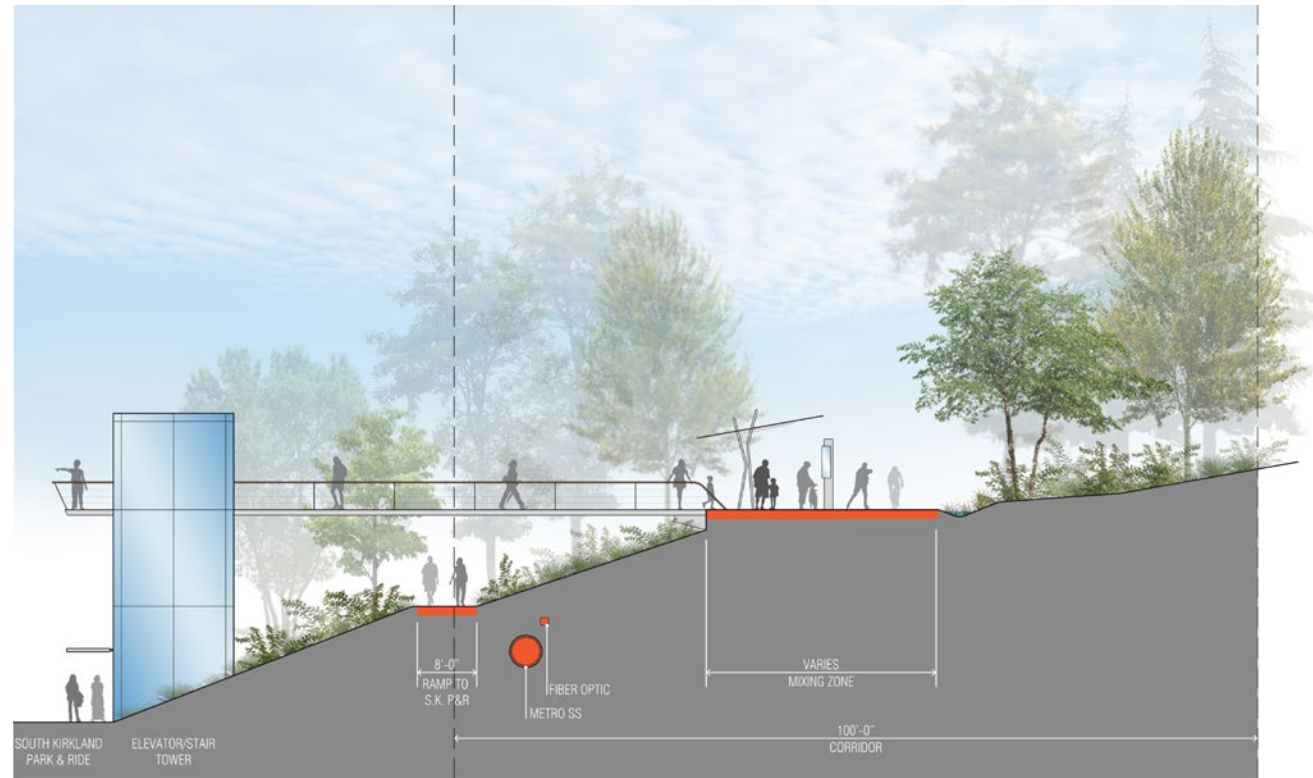
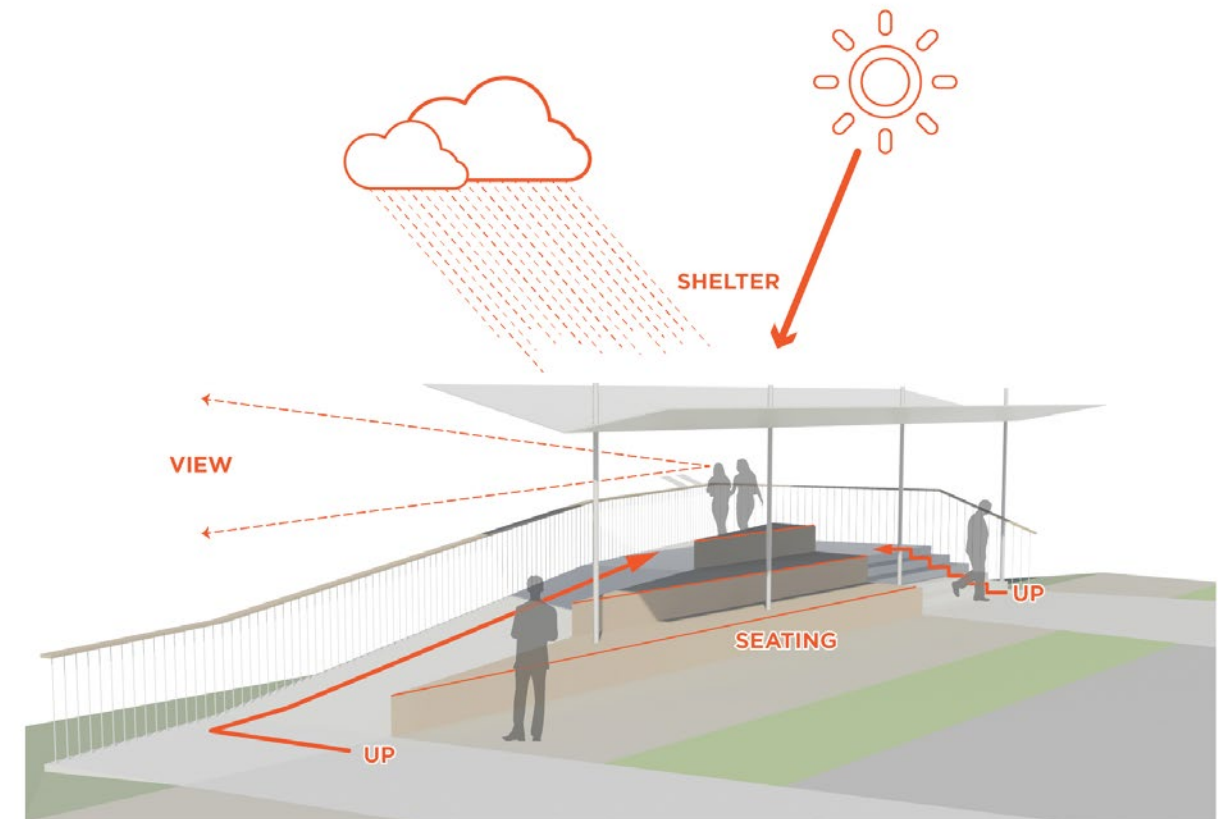
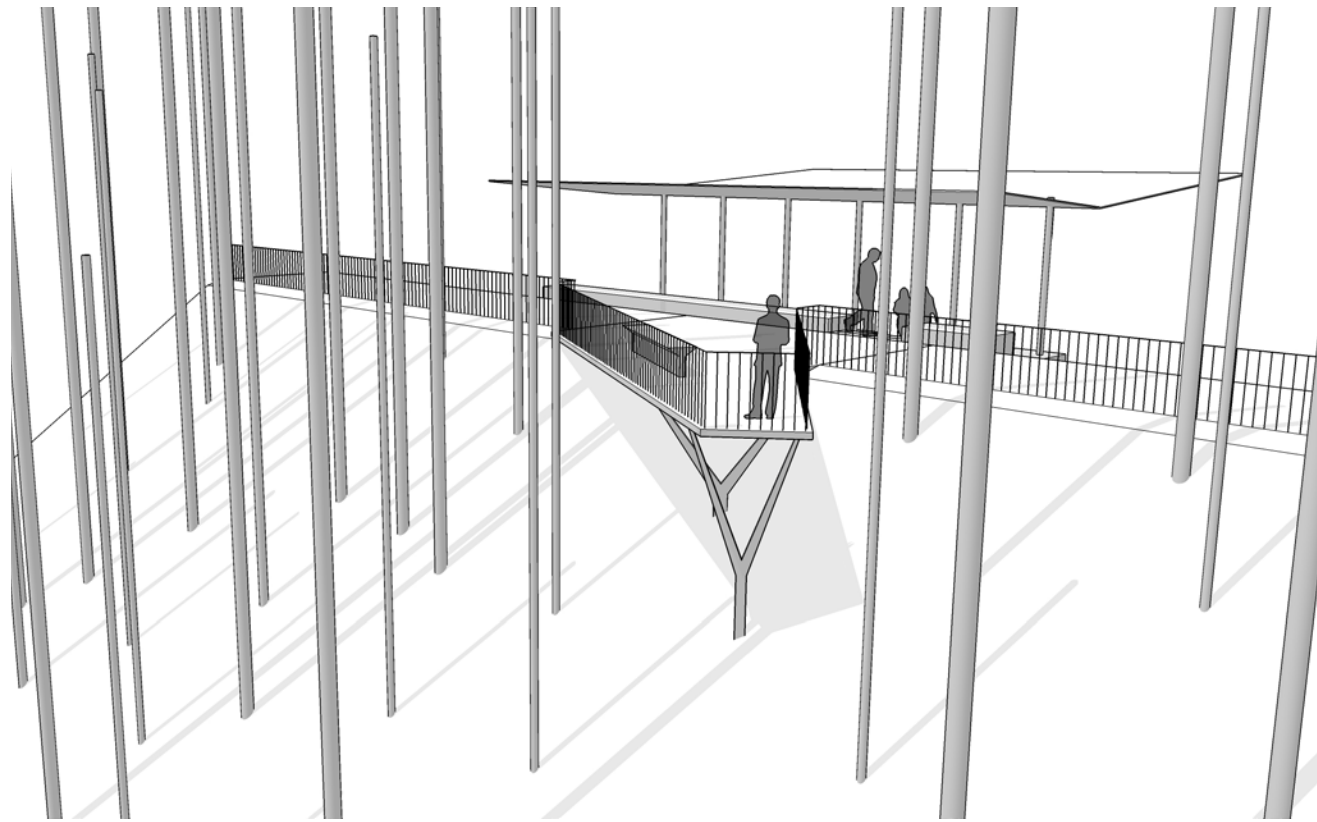
UP / DOWN

DRY / WET



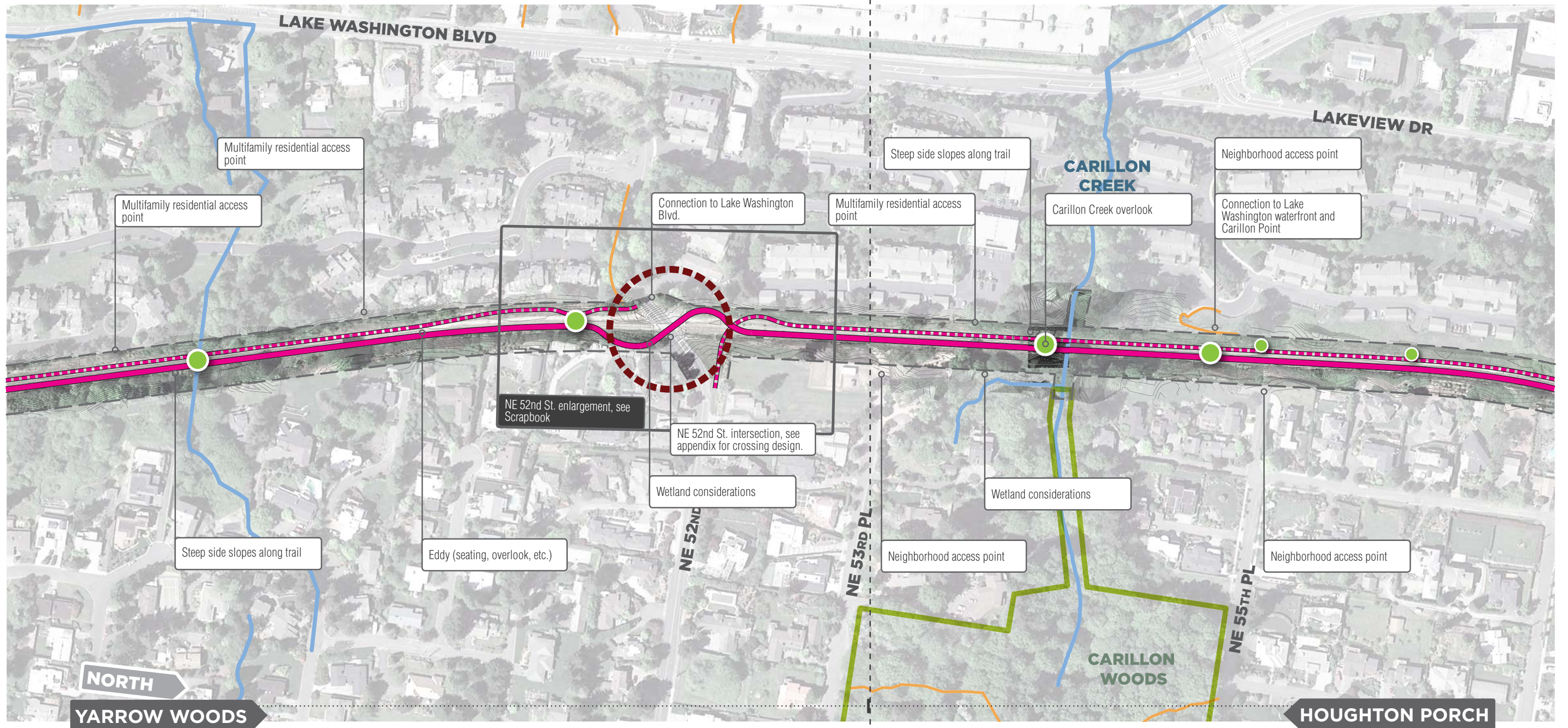
DESIGN STRATEGY

Corridor rhythm: An overarching design strategy recognizes the ever-present yet fluctuating influences of urban and natural conditions, strengthening them through the character and detailing of amenities as a contrast to the typically expected aesthetic to create surprise.



EXPERIENTIAL ELEMENTS

A series of recurring elements enhance the corridor as a destination within the city. They include event spaces to foster gathering, eddies for places of pause, art, furnishings, programmed activities, historic interpretation, and surface water enhancements.



- | | | | |
|--|--------------------------|--|---------------------------------|
| | SHARED USE PATH | | GRADE SEPARATED CROSSING |
| | SIDE TRAIL | | TRAIL |
| | TRAIL ELEMENT | | STREAM |
| | RIGHT OF WAY | | PARK |
| | CROSSING AT GRADE | | SCHOOL |



SITE-SPECIFIC LAYOUT

High-level planning documents for the full 5.8-mile corridor identify recommendations for functionality, layout, and experiential elements to carefully integrate with the unique physical characteristics (topography, ecological resources, and access points) of the CKC.



CHARACTER ZONE SCRAPBOOK

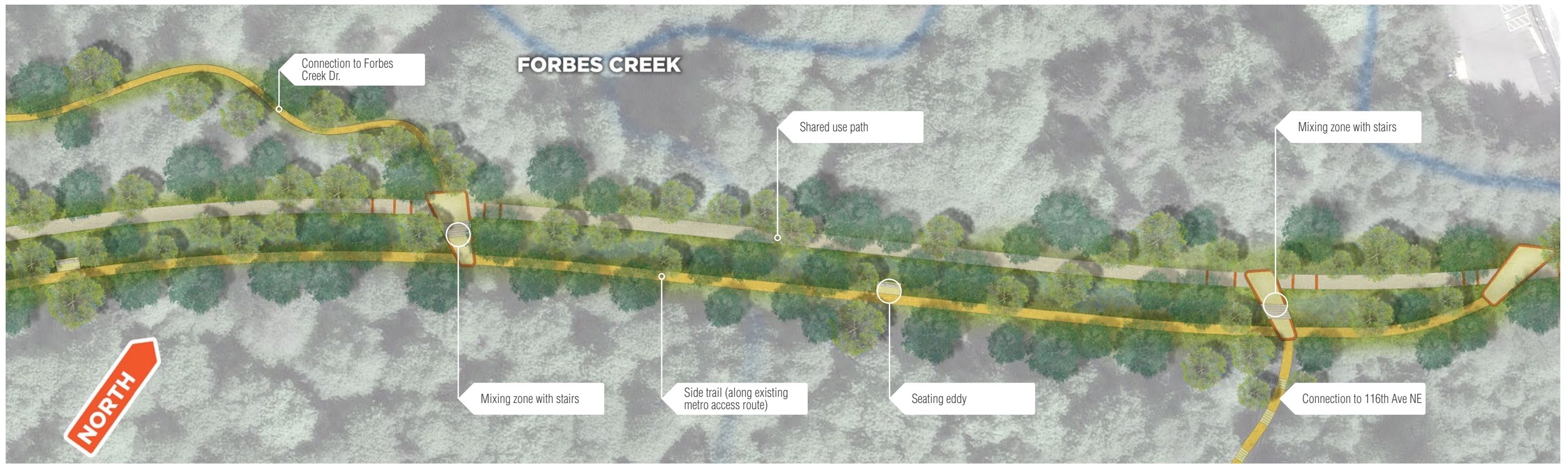
Yarrow Woods: Providing detailed inspiration for opportunities and design influences by focusing on a small part of each character zone; illustrative graphics and inspired narratives convey the richness of the design.



CHARACTER ZONE SCRAPBOOK

Convergence Zone: In an urban zone, the scrapbook captures an adjacent community park as a significant recreation "event" on the trail, and a future "activated edge" of development providing a connection to the adjacent business district.





CHARACTER ZONE SCRAPBOOK

Highland Pass: In a naturalistic zone, the scrapbook illustrates a light touch, weaving side paths through existing groves of trees, a boardwalk next to an enhanced wetland, and a trail connection to an adjacent school and park.



ORIGINAL RAIL CONDITION



INTERIM INTERVENTIONS



INTERIM TRAIL



MASTER PLAN TRAIL

REALIZING THE VISION

Enabled by the master plan's rich detail, including phasing strategies, project costs, constructability analyses, and urban design guidelines, the city implemented an interim trail to claim the corridor as it evolves into a treasured civic amenity.