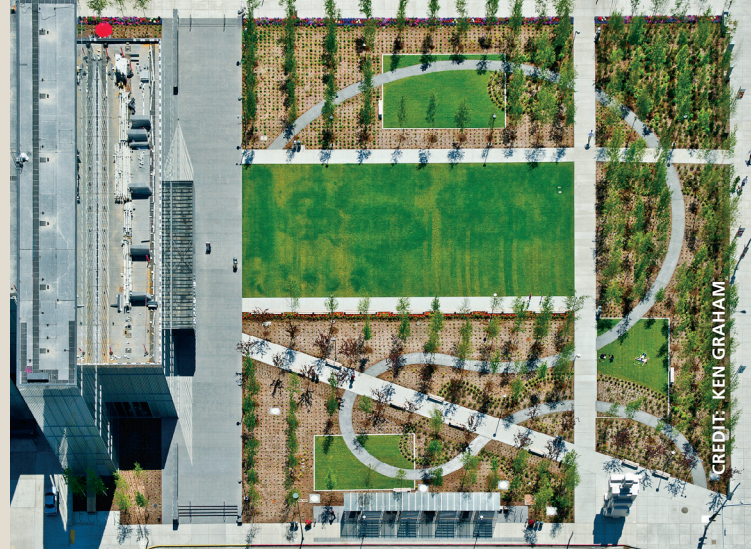


**The Anchorage Museum Common
Anchorage, Alaska**

Landscape Architect:	Charles Anderson Atelier ps
Client:	Anchorage Museum
Architect:	David Chipperfield Architects, design architect; Kumin Associates, Inc., architect of record
Engineer:	BBFM Engineers; RSA Engineering; Tryck Nyman Hayes, Inc.
Other consultants:	Earthscape, consulting landscape architect; George Sexton Associates, lighting consultant



PROJECT DESCRIPTION

The Anchorage Museum Common is a 2-acre park where elements of landscape, history, and culture beckon to visitors and locals alike. This new setting for the expanded museum is an urban birch forest “scooped” out of the surrounding landscape, creating one of the city’s most memorable and emblematic civic spaces.

The grove of The Birches uses paper birches, one of the most culturally and ecologically important native trees in the state, salvaged from commercial developments. The trees are planted on a graduated grid, moving from dense spacing at the west end of the site to a light and airy configuration at the building face. The curvilinear *Walk of the Birches* weaves through the grid, while the other pathways cut through it.

The Common is designed to inspire and accommodate the museum’s programming and will host a diverse set of civic

celebrations and activities throughout the year. Rooms carved into the forest are surfaced with turf and hardscape, creating areas for gathering, sculpture, and group activity. The design of the Common distills the museum’s regional context to the essence of a birch forest and shifts the paradigm of landscape design away from static garden typology to an expressive, dynamic ecology that adapts to the urban environment.

JURY COMMENTS

This design expresses the native landscape in a thoughtful response to the program and architecture. The jury was impressed with the combined effect of the two facets of this design: the clean lines and crisp geometry are a highly functional and complementary formal response to this modern façade, while the dynamic planting design introduces a rich complexity of scale, form, texture, and color—all beautifully mirrored in the building’s façade. This design elegantly unites site and architecture to create place.



CREDIT: KEN GRAHAM



CREDIT: KEN GRAHAM