

ASLA

HALS Liaisons Appointment and Duties

Definitions

For the purpose of this document, the following words shall have the meanings as given in this section:

- A. "ASLA" means the American Society of Landscape Architects.
- B. "HALS Liaisons Coordinator" means a member of the HALS Subcommittee designated to coordinate the work of the Liaisons.
- C. "Executive Committee" means the Executive Committee of the ASLA Board of Trustees.
- D. "HALS" means the Historic American Landscapes Survey.
- E. "Chief of HALS" means the Chief of the Historic American Landscapes Survey within the National Park Service.
- F. "Guidelines" mean the guidelines developed by NPS and ASLA concerning measured drawings, photography, and written histories, which must be followed in order to qualify HALS projects for cataloguing with the LOC.
- G. "HP-PPN" means the Historic Preservation Professional Practice Network.
- H. "HALS Liaison" means the HALS representative for each state or part of a state served by an ASLA chapter.
- I. "LOC" means the Library of Congress.
- J. "Manager" means the ASLA Federal Government Affairs Manager.
- K. "MOU" means the Memorandum of Understanding between the NPS, ASLA and LOC to implement HALS.
- L. "NPS" means the National Park Service.
- M. "HALS Subcommittee" means the HALS Subcommittee of the Historic Preservation Professional Practice Network.
- N. "Vice President" means the ASLA Vice President for Government Affairs.

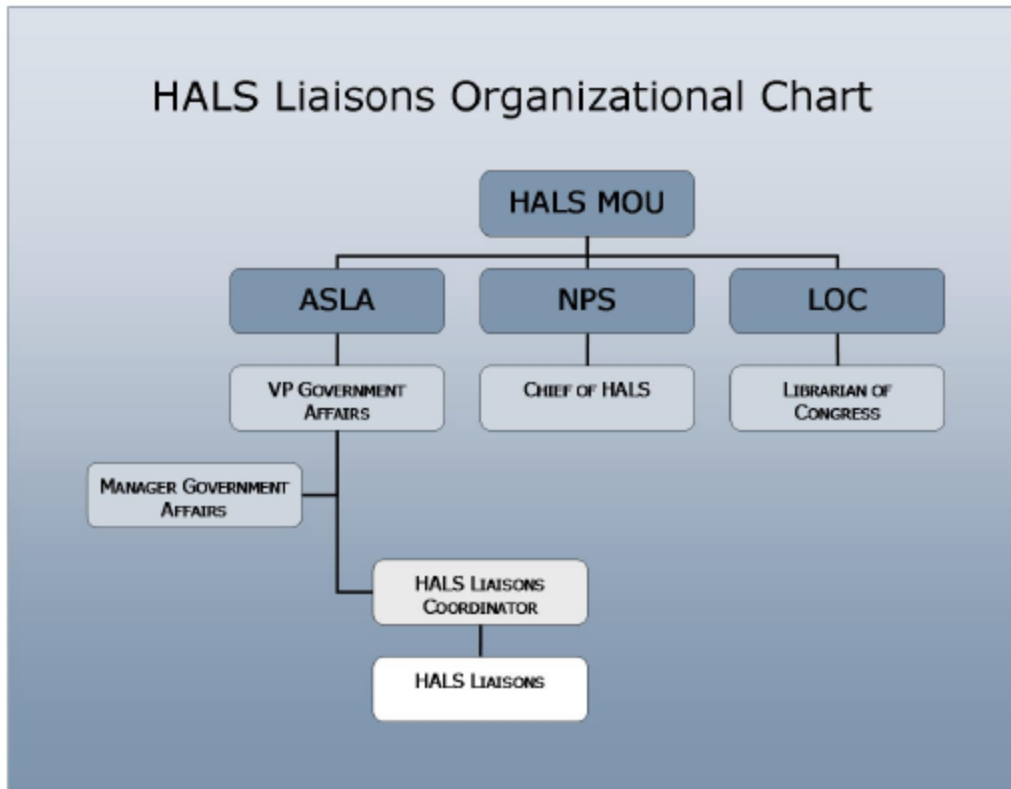
Establishment of HALS

ASLA is party to a tripartite Memorandum of Understanding with the National Park Service and the Library of Congress to implement and achieve the goals of the Historic American Landscapes Survey. ASLA's obligations under the MOU are as follows:

The Society shall, through its organization and its individual members, aid and encourage the Survey in various ways, including the enlistment of support, financial and otherwise, and the giving of professional advice when needed and called upon.

ASLA meets its obligations under the MOU, in part, through the HALS Subcommittee. A national network of HALS Liaisons appointed by the chapter presidents implements the MOU locally, under the

direction of the HALS Liaisons Coordinator. The Vice President for Government Affairs oversees the administration of the MOU. The Manager of Federal Government Affairs provides staff support. (See organizational chart below)



HALS Liaisons Coordinator

The HALS Liaisons Coordinator shall be appointed by the Chair of the HP-PPN or his/her designee from among the members of the HALS Subcommittee for a two-year, renewable term. The Coordinator may serve for up to three consecutive terms; however, the Coordinator may resign of necessity or be dismissed by the Chair for failure to act or other cause at any time.

Creation of Position of HALS Liaison

There is created in each ASLA chapter the position of HALS Liaison. In those chapters serving multiple states, a HALS Liaison shall be appointed from each state.

Creation of Liaisons Network

There is created a network of HALS Liaisons which shall consist of the HALS Liaisons from each chapter and state.

Purpose

Inasmuch as ASLA is a partner to the MOU implementing HALS, each chapter, through its HALS Liaison, will provide local knowledge and conduct local activities to carry out ASLA's obligations, and will report these actions in the chapter's annual report.

Appointment

HALS Liaisons shall be appointed by the chapter president, with the advice of the HALS Liaisons Coordinator. Appointees should be ASLA full members, associate members or affiliate members in good standing.

Term of Office

HALS Liaisons shall continue their duties until replaced by their successors. However, any Liaison may resign of necessity or be dismissed by the chapter president for failure to act or other cause at any time.

Duties and Responsibilities

- A. Lobby federal legislators for initial and ongoing Congressional funding of HALS.
- B. Compile, prioritize, and update a list of local examples of historic landscapes that are threatened, highly significant, and/or highly valued.
- C. Assist the Chief of HALS to compile a comprehensive national inventory of possible HALS study sites.
- D. Identify one or more historic landscapes that merit complete documentation pursuant to the guidelines and coordinate such documentation as resources allow.
- E. Coordinate HALS activities with the State Historic Preservation Office (SHPO).
- F. Advise on the review and revision of state and local historic preservation laws and standards to include documentation of historic landscapes.
- G. Educate government agencies and consultants about the use of HALS for compliance with Section 106 of the National Historic Preservation Act, Section 4(f) of the Transportation Department Act of 1966, and the National Environmental Policy Act (NEPA).
- H. Promote public awareness of the importance of historic landscapes and the use of HALS.
- I. Encourage donations from local philanthropists to the HABS/HAER/HALS Foundation for supplemental private funding of HALS.