

WASLA Newsletter

Washington Chapter American Society of Landscape Architects

APRIL 2010

In This Issue

[WASLA Awards](#)

[LARE Review](#)

[Emerging Professionals
Happy Hour](#)

[Restorative Design Collective](#)

[Call for Submissions](#)

[ELUG April Meeting](#)

[Upcoming AIA Events](#)

[Cultural Landscape
Foundation](#)

[Sketch Up Training](#)

Events Calendar

Announcements

WASLA AWARDS

On behalf of the Executive Committee, we would like to thank our sponsors (Pacific Earthworks, Nussbaum Group, and Playcreation), members, committee members and jurors for making the 2010 WASLA awards such a great success. The event was held at the Januik/ Novelty Hill Winery, an inviting atmosphere to mingle, view submissions, partake in wine tasting, and catch up with old friends. Winning submissions will soon be posted to www.wasla.org. Congrats to this year's winners and we look forward to the next awards program in the spring 2012.

LARE SECTION E: GRADING AND DRAINAGE PREPARATORY COURSE

As part of our mission to increase the Value of WASLA to our members, we have organized to bring grading guru Ray Freeman to Seattle to put on his 3-day LARE Section E (Grading) Workshop. Ray has been offering his class for years in California with great success for participants. You may have seen links to it on our website previously. Now you can attend without having to pay airfare. Here are the details:

Dates: April 16-18, 2010

April 15-16

[WSU WASLA Student Awards](#)

April 16-18

[LARE Review Section E, Las Vegas](#)

April 16-18

[LARE Review Section E, Seattle](#)

April 23-25

[LARE Review Section C, Marin County](#)

April 30 - May 2

[LARE Review Section E \(Advanced\), Marin County](#)

May 8

[UW WASLA Student Awards](#)

May 13

[AIA/WASLA Happy Hour](#)

Times: Friday 9 am-6:30 pm, Saturday 9:00 am-6:30 pm, and Sunday 9 am-6 pm.

Location: Marriott Courtyard Seattle Downtown/Lake Union
925 Westlake Ave N, Seattle WA 98109, (206) 213-0100

Call for reservations at (800) 228-9290 and ask for the "WASLA LARE Review" group room rate of only \$89. This rate is only good through March 26, 2010.

Course Cost: \$445

Registration:

www.regonline.com/wasla201004

We hope you are able to take advantage of this unique opportunity. Space is limited to 24 people, so do not delay.

WASLA/AIA EMERGING PROFESSIONALS HAPPY HOUR SERIES

The AIA/ WASLA emerging professionals happy hour series continues.

FREE: No registration necessary, just come by.

Networking has never been more important. Join your friends and colleagues at this casual, monthly happy hour; a collaboration with Washington Association of Landscape Architects and AIA Seattle's Young Architects Forum. Make new friends and professional contacts while visiting firms around the city. The series will take place on the second Thursday of every month. Be there May 13, 5:00-7:00 PM, as GGLO continues this series.

June 10

[AIA/WASLA Happy Hour](#)

05/13 GGLO

1301 1st Avenue
Seattle, WA 98101

July 8

[AIA/WASLA Happy Hour](#)

06/10 SCLATER PARTNERS
07/08 AIA SEATTLE
08/11 BASETTI
09/09 OSKA

August 12

[AIA/WASLA Happy Hour](#)

To see photos from a previous Happy Hour, visit <http://www.aiaseattle.org/node/2765>

September 9

[AIA/WASLA Happy Hour](#)

**THE RESTORATIVE DESIGN COLLECTIVE CREATES
NEW SCIENCE BUILDING FOR THE BERTSCHI
SCHOOL PUSHING THE ENVELOPE FOR SUSTAINABLE
SITE DESIGN**

By Mark Sindell ASLA, LEED AP, GGLO

October 14

[AIA/WASLA Happy Hour](#)

The Restorative Design Collective is currently designing a cutting-edge sustainable science building for the Bertschi School, an independent elementary school in Seattle's Capitol Hill neighborhood. Working pro bono, the multi-disciplinary team is designing the new science building to meet the standards of the Cascadia Region Green Building Council's [Living Building Challenge](#). This innovative program encourages projects to achieve self-sufficiency by generating all energy with renewable resources, harvesting and treating all water on site, and operating at maximum levels of efficiency with a healthy indoor environment.

Our Sponsors



[Pacific Earth Works](#)

EJIW EAST JORDAN
IRON WORKS. FIST TANK

[East Jordan Iron Works](#)

[Hima Nursery](#)



[Nussbaum Group](#)

[Pacific Plants](#)



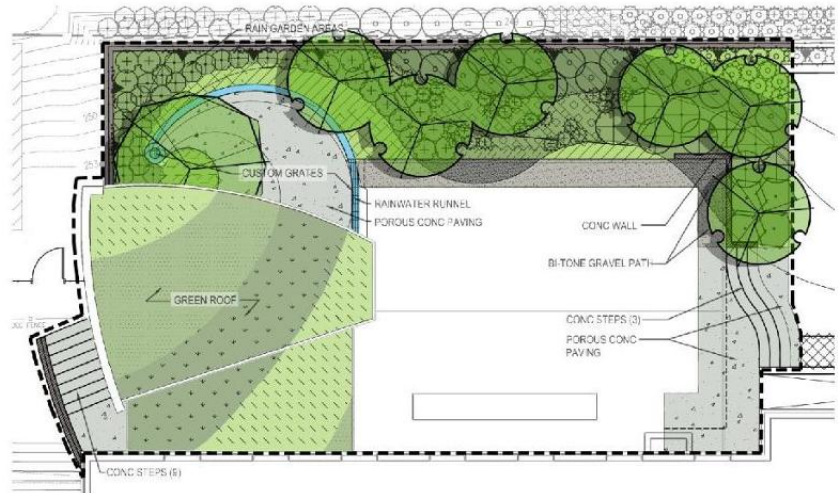
[Subtle Light Photography](#)



[Wood Stone Corporation](#)

Living Landscape

- Green Roof
- Urban Agriculture
- Living Wall
- Rain Gardens



With only a handful of local projects following the Living Building Challenge's guidelines, Bertschi School's new science building - slated for completion in November of 2010 - has the potential to be the first Living Building completed in the State of Washington.

As part of the Collective, Landscape Architects from GGLO collaborated with the project team (led by KMD Architects) and the Owner to develop programmatic elements for the site. Primary goals were to express the project as a Living Building with design inspired by natural forms, to maximize educational opportunities for the school's curriculum, and for all features to have a specific ecological function.

Focusing on the Living Building Petals of Site, Water, Health and Beauty, the design includes a **Green Roof**, **Rain Gardens**, **Urban Agriculture**, and a **Living Wall**.



Click here to find out about sponsoring this newsletter.

Social Networks

Join our Group on
[LinkedIn® professional networking services.](#)



WASLA Executive Committee

President
Kellye Hilde, ASLA
kphilde@gmail.com

President Elect
Len Zickler, FASLA
lzickler@ahbl.com

Past President
Ed Winkley, ASLA
winlee@wsdot.wa.gov

Trustee
Don Benson, ASLA
Don_Benson@USRCCorp.com

Treasurer
Jasmine Aryana, ASLA
jasminearyanaasla@yahoo.com

Secretary
Katie Bang, ASLA
katieb@bergerpartnership.com

Green Roof

Located on the north side of an existing building, an Ecohouse was developed to house many of the interactive elements of the project. The Ecohouse roof will include the first Xero Flor 'Moss Mat' on the West Coast. Pre-grown in a water retention fleece layer, the soil-free system is less than 2" thick, requires no irrigation, and minimizes structural load. The green roof will provide initial filtration of storm water before it enters a non-potable water system to be used for irrigation and establishment of on-site gardens. A variety of mosses create contrasting textures, hues, and forms that are meant for viewing from above via adjacent buildings. The moss waves, continued through the ground plane, meet the intent of the 'Biophilia' imperative for expression of natural shapes, forms, patterns, and processes.

Rain Gardens

Rain gardens with native sedges and grasses will infiltrate all storm water thorough a free-draining subsoil layer. The system includes an overflow back to a rainwater harvesting cistern and emergency overflow to an existing sub-surface detention tank to accommodate a 100-year or greater storm event. The path of rainwater from the sky, over the roof, into collection, and out through the rain gardens will be expressed to students through an indoor-outdoor runnel bordering a porous concrete outdoor classroom.

Urban Agriculture

Based on Living Building Challenge urban agriculture requirements, 80% of planted area is required as agriculture appropriate to location, climate, and culture. The team proposed ethno-botanical gardens to connect to the native and natural history curriculum of Bertschi School. This will also create a harvestable learning garden that can succeed in the shade of adjacent buildings. The outdoor classroom, adorned with reclaimed timber seating blocks, will provide the forum for study and collection of native Huckleberries, Wild Strawberries, Indian Plum, Labrador Tea leaves, Salal, Camas and Oregon Grape. Kiwi's and Grapes will be harvested from vines grown on a wire mesh fence along the perimeter of the site.

Member at Large (Western Washington)

David Hilgers, ASLA
dhilgers@triadassociates.net

Associate Member at Large (Western Washington)

Courtney Landoll, ASLA
CLandoll@watershedco.com

Member at Large (Eastern Washington)

Craig Anderson, ASLA
craig@storhaug.com

Join our list

Join Our Mailing List!

Living Wall

In addition to storm water, all wastewater will be managed on site to meet the requirements of the Water Petal. A composting toilet will eliminate black water entirely, leaving only grey water to manage. This remaining 'light' grey water from the classroom sinks will be piped directly through a filtered sub-surface drip irrigation system onto a floor to ceiling Living Wall for 100% uptake, eliminating discharge into the City sewer system.

A primary challenge for the project is its location on the north side of an existing multi-story building. To treat and uptake grey water, plants need to thrive year round. To thrive year round, light is critical - and this is an indoor environment (current code would not allow discharge of grey water outside without exemption and an on-site septic system permit). The team worked with the University of Washington Integrated Design Lab to model light levels of the interior of the new building, and with the living wall module manufacturer to set minimum criteria for the system. A skylight and solar powered metal halide lights were designed to maximize the grey water uptake rate of the plant material. In addition, Pothos and Philodendron - large leaved tropical plants that can handle saturated soils - were selected to maximize evapotranspiration in winter months, when the classroom is used most. The wall includes moisture sensors and will be monitored by students for performance absorbing and treating the grey water. The team worked with the science teacher to confirm experiments did not include materials detrimental to plant health.

The project will be available for site tours at completion next fall, and has become a catalyst for King County Public Health, Drinking Water, and Wastewater discussions to enable regulatory change for on-site wastewater management and rainwater harvesting for potable water use on non-single family projects in urban areas.

CALL FOR SUBMISSIONS: FORUM

Renewable city: Ideas to repurpose vacant urban spaces

We are living a new economic paradigm, with profound impacts on our built environment. To what creative uses can we put vacant or underutilized buildings? Can partially constructed projects contribute to, rather than diminish, our neighborhoods? Are there more constructive uses for vacant lots than just another parking lot? How might we rethink outmoded infrastructure? How does the new economy create opportunities for lean, fresh solutions to our urban problems?

AIA Seattle's Forum magazine is seeking illustrated ideas that repurpose or rethink underused or vacant spaces of all kinds for its upcoming issue, "Coming Out of the Curve." We challenge designers and artists to think boldly about innovative approaches to underutilized land, buildings or infrastructure.

Submittal instructions

Send a 72dpi jpeg with a 100 word synopsis to Isla McKetta at imcketta@aiaseattle.org by the deadline below. Jpegs should be at least 8.5"x9". We cannot accept previously published images. If your idea is selected, a 300 dpi version will be requested.

Selected ideas will be published in the August/September issue of Forum magazine.

Timeline

Coming Out of the Curve

Ideas due May 14, 2010

Publication date August / September 2010

Mission and Audience

Forum is a platform for critical dialogue about architecture in Washington and the Pacific Northwest. It reaches over 4000 architects and related professionals in the state of Washington.

To learn more visit <http://www.aiaseattle.org/forum>.

EASTSIDE LEED USERS GROUP (ELUG) APRIL MEETING ANNOUNCEMENT

New Trends In Energy Design and Existing Buildings Retrofit

April 20th 7:30am-9:00am
GLY Main Office
15 Lake Bellevue Drive, Suite 200
Bellevue, WA 98005

UPCOMING AIA EVENTS

Saturday Seminar: How to Select & Work with an Architect

April 10, 9:30am-noon
AIA Seattle, 1911 First Avenue
Need an Architect? AIA Seattle's Saturday Seminar can help answer this and other FAQs about what architects and clients can achieve together, and how to get the best value for your investment. Presenters: Nicole Starnes Taylor AIA and Mark Travers AIA.

The Blue Book GC Showcase

April 13, 3:00pm-7:00pm
Qwest Field, 800 Occidental Ave S, Seattle
FREE

The Blue Book GC Showcase is a free networking event, designed to bring together subcontractors and suppliers with the companies that need their services. Visit the AIA Seattle booth staffed by Practice and Ethics Committee current and former co-chairs Jerome Diepenbrock AIA and Myer Harrell AIA.

ASHRAE April Chapter Meeting: Impact of Green Building Code Changes on the Building Envelope

April 14, 11:30am-1:15pm

This presentation will examine how energy codes affect building professionals in the design and construction of new buildings and the redesign and renovation of existing buildings. With a focus on Washington State and Seattle building codes, we will explore the challenges with current building envelope practices, and strategies to meet the new energy code requirements. Cost: \$35 ASHRAE/AIA Members, \$40 Guests, \$15 Students (Please Make your reservation by Friday, April 9)

1 LU

Design Salon Series: Your City, Inside

Presented by the AIA Seattle Design Committee

April 21, 4:00pm-6:00pm

Henrybuilt Showroom, 997 Western Ave, Seattle

2 LUs

Featuring Todd Vogel of the Nord Alley Parties and International Sustainability Institute and Jim Graham AIA of Graham Baba Architects. The topic will be those spaces inside the city that can be re-considered, re-programmed, and what the future holds for the city "within". Both speakers work and facilitate infill, adaptive re-use, and the re-programming of city spaces. Tosh Drake of the AIA Seattle Design Committee will moderate the discussion.

THE CULTURAL LANDSCAPE FOUNDATION CALENDAR OF EVENTS

Why Not Cultural Systems?

Apr 16 2010 | Apr 16 2010
Charlottesville Community Design Center

Heroes of Horticulture - Original Photography Exhibit

Apr 30 2010 | Jun 20 2010
Fellows Riverside Gardens' Visitor Center

Landscapes for Living: Post War Years in Texas

May 6 2010 | May 8 2010
Dallas Museum of Art

Designing Wildlife Habitats

May 14 2010 | May 15 2010
Dumbarton Oaks

Heroes of Horticulture - Original Photography Exhibit

Jul 17 2010 | Sep 12 2010
The Bascom

A Moveable Feast

Sep 10 2010 | Sep 10 2010

2010 Silent Auction

Sep 11 2010 | Sep 12 2010
Washington Convention Center

What's Out There Weekend

Sep 25 2010 | Sep 26 2010

For more information on the cultural landscape foundation go to www.tclf.org.

SKETCH UP TRAINING

Join [Bright Ideas Consultants](#), a Google Authorized Training Center, in Seattle for 2 days of intermediate and advanced SketchUp training and earn 9 AIA / ASLA continuing education credits. Learn techniques that will streamline your design process, expedite the creation of graphic presentations, eliminate expensive software, and ultimately afford you more time for design. Prepare for the training by attending the online [Free SketchUp 101](#) class or requesting a recording. Please visit the [Seattle Training Page](#) to learn more about the event and take advantage of our early registration discount. Also, all attendees will receive a \$100 off promo code for the SketchUp Pro software.

Instructor : Mike Brightman, M.Arch

Dates : March 01 - 02, 2010

Location : 601 Union Street, Suite 4200, Seattle, WA 98101

April 21, 2010

[Google SketchUp Essentials II ::](#)

830am - 1130am

\$300 - 3 AIA/ASLA CEU's

[Google SketchUp Advanced Skills ::](#)

1

00pm - 400pm

\$300 - 3 AIA/ASLA CEU's

April 22, 2010

[Google SketchUp Advanced Landscape Skills ::](#)

830am - 1130am

\$300 - 3 AIA/ASLA CEU's

[Beyond SketchUp Workshop ::](#)

100pm - 400pm

\$300 - No AIA/ASLA CEU's offered