

Volunteer Park

Preserving and Restoring
Seattle's Most Iconic Olmsted Landscape

Brooks Kolb, ASLA; Jennifer Ott, Doug Bayley, Brian Giddens













58115
ASAPHEL CURTIS



Beautiful Seattle. The Lily Pond and the Tower at Volunteer Park.



Historic Plans

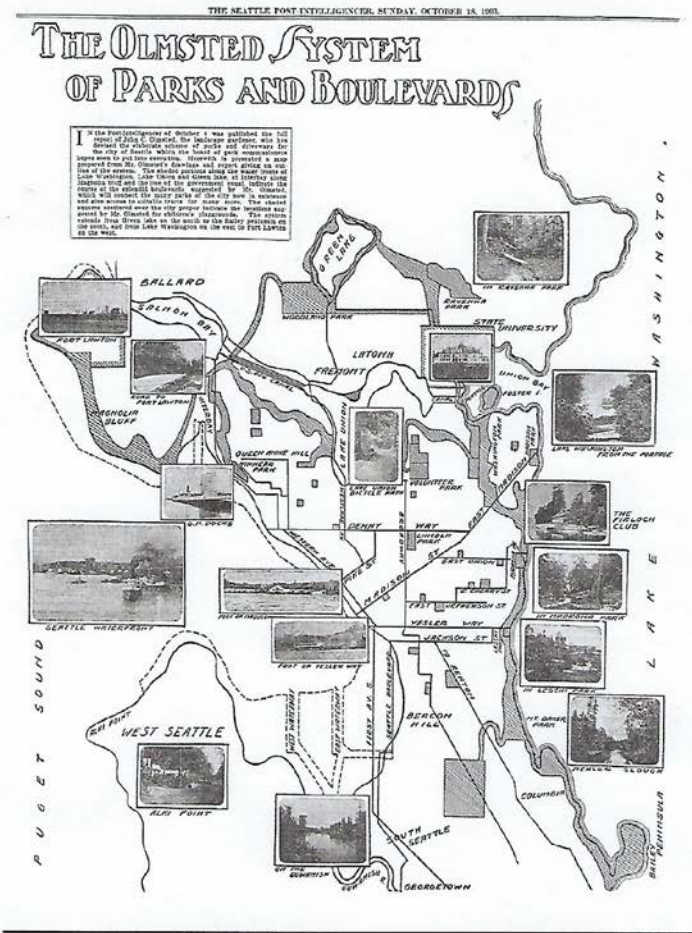


Figure 12 – Seattle Park and Boulevard System Plan, 1903

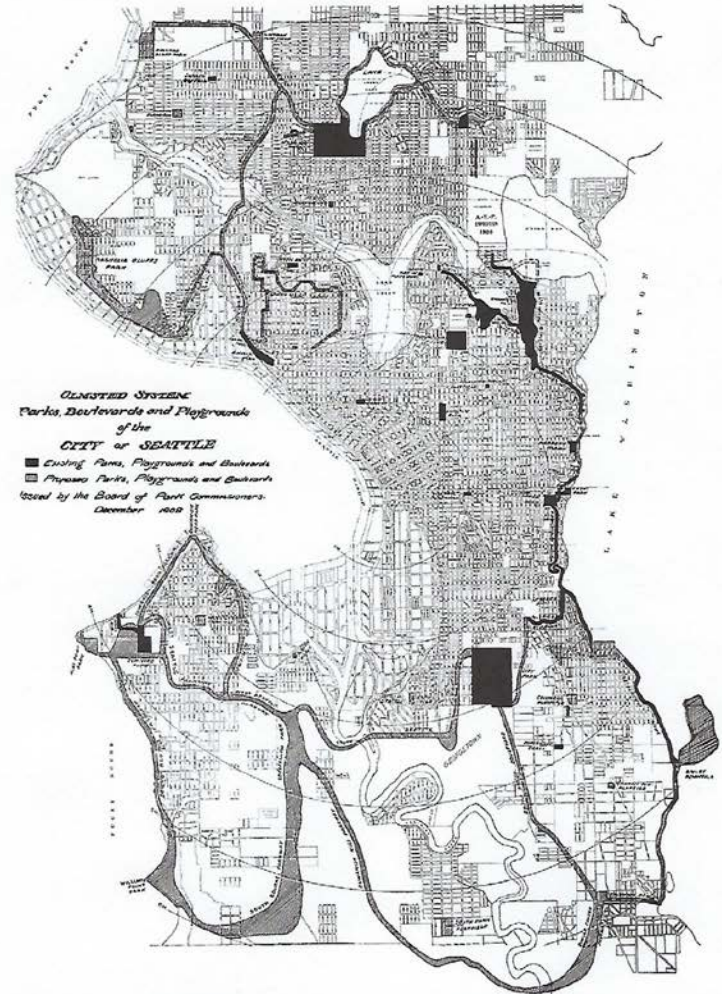
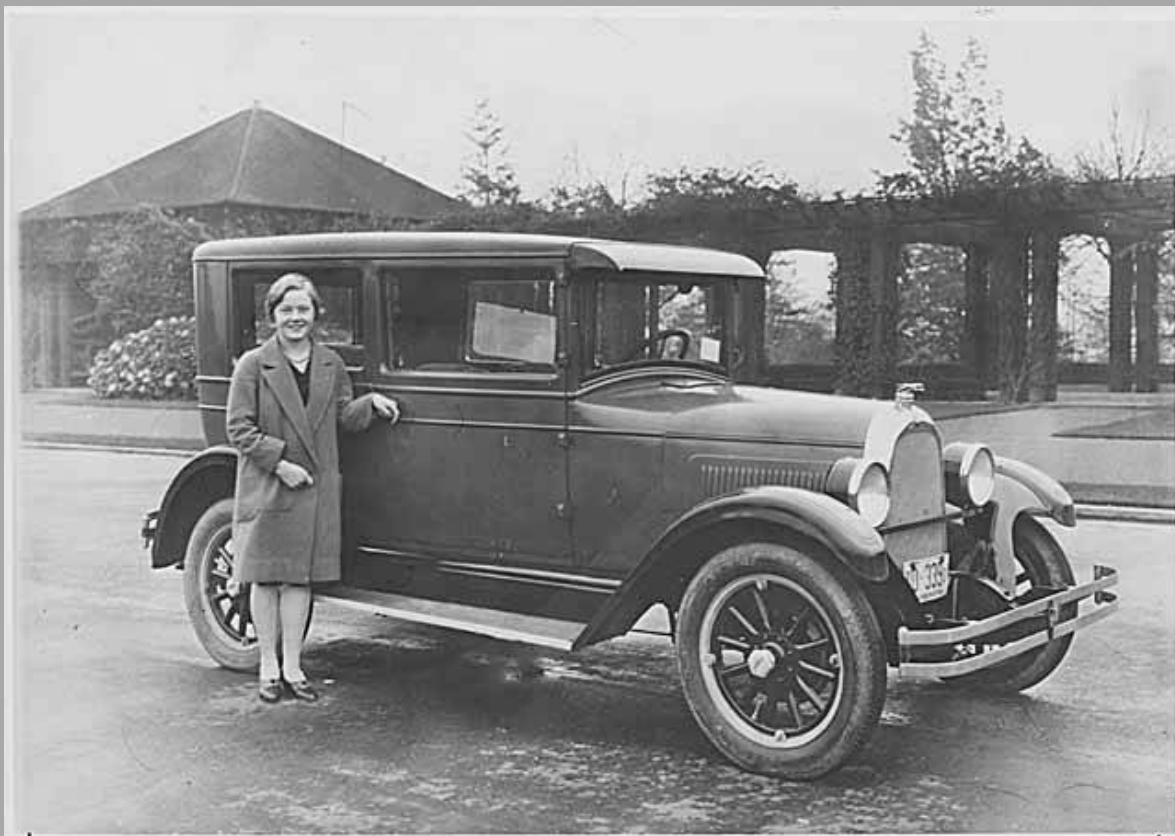


Figure 13 – Seattle Park and Boulevard System Plan, 1908

J.C. Olmsted Seattle visits – 1903 and 1908

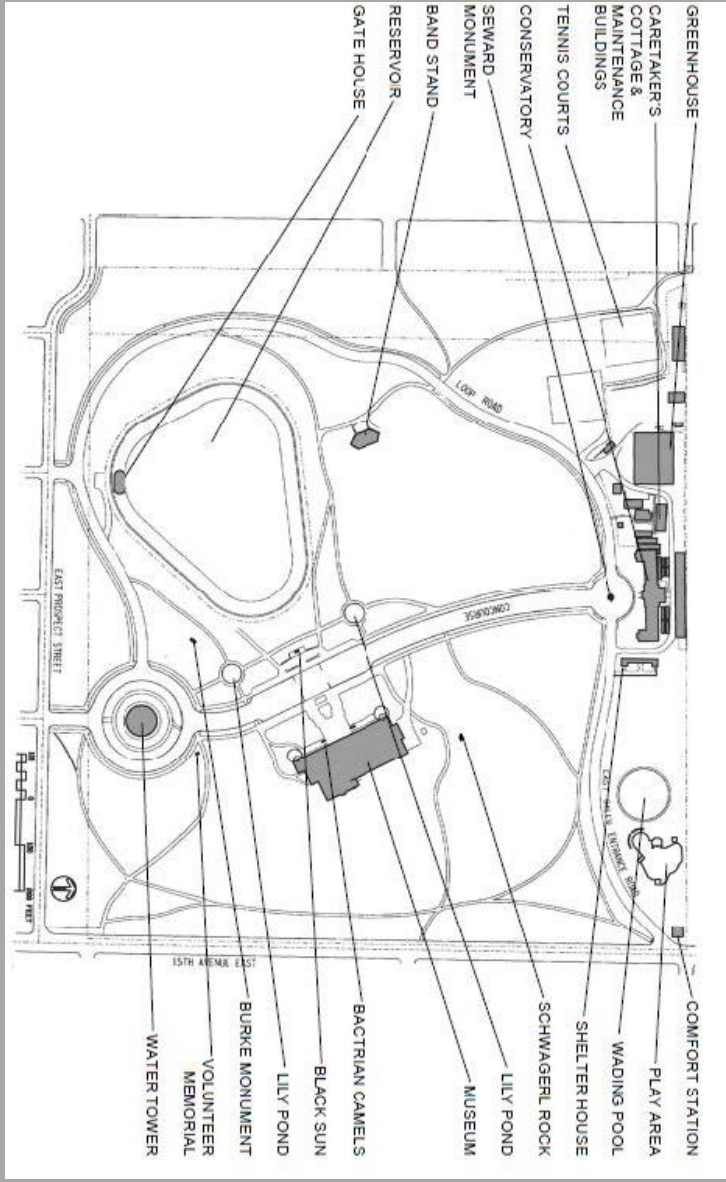
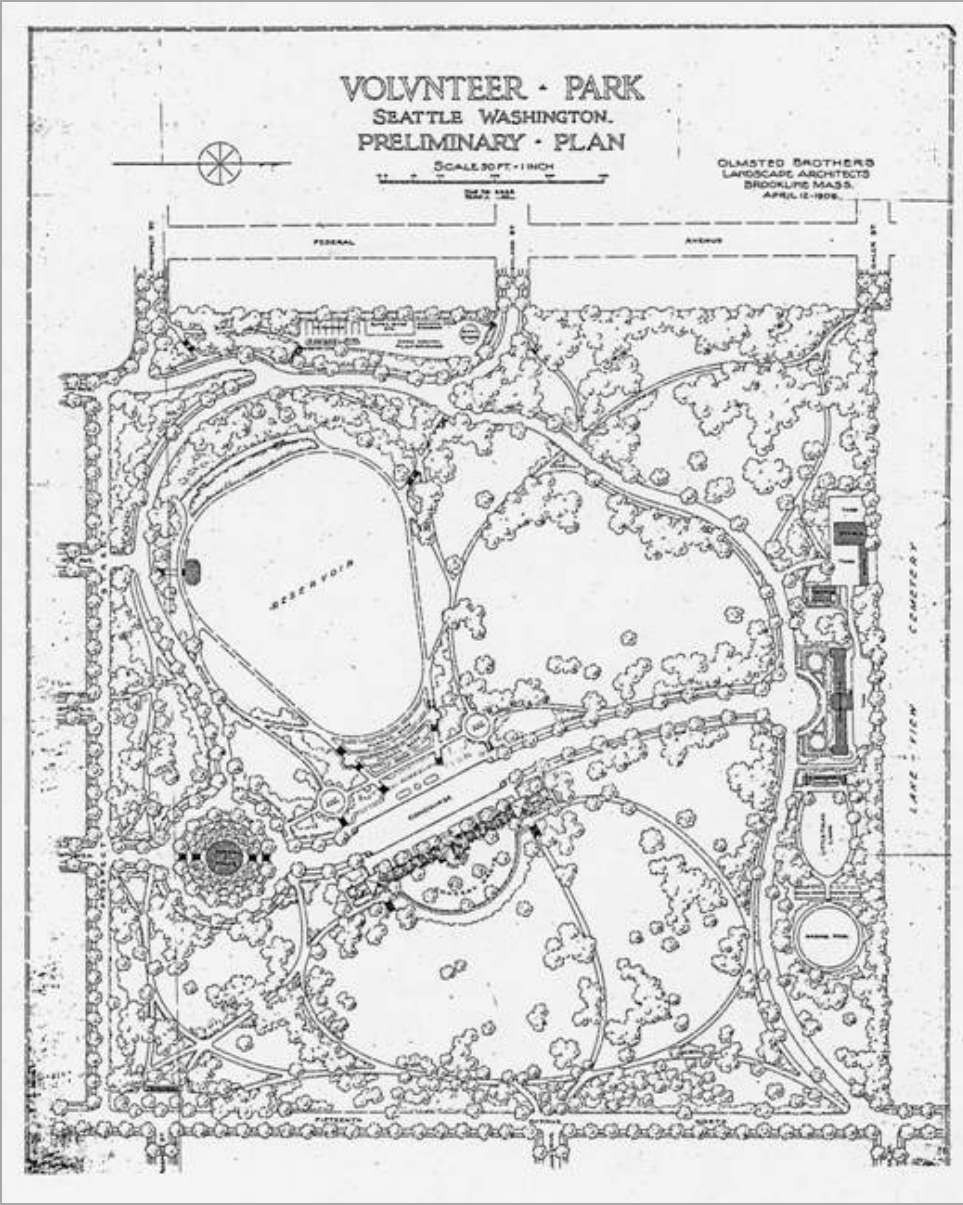
Olmsted Design Philosophy applied to the Seattle Park System:

- Greenswards
- Meandering drives; separation of pedestrians, vehicles, bicycles, etc.
- Borrowed mountain and lake views
- Variety of park purposes and styles – “genius of place”
- Layered planting design with mix of ornamentals and natives
- Separation of programmed, more formal, spaces and un-programmed, less formal, spaces



Property of Shoreline Historical Museum









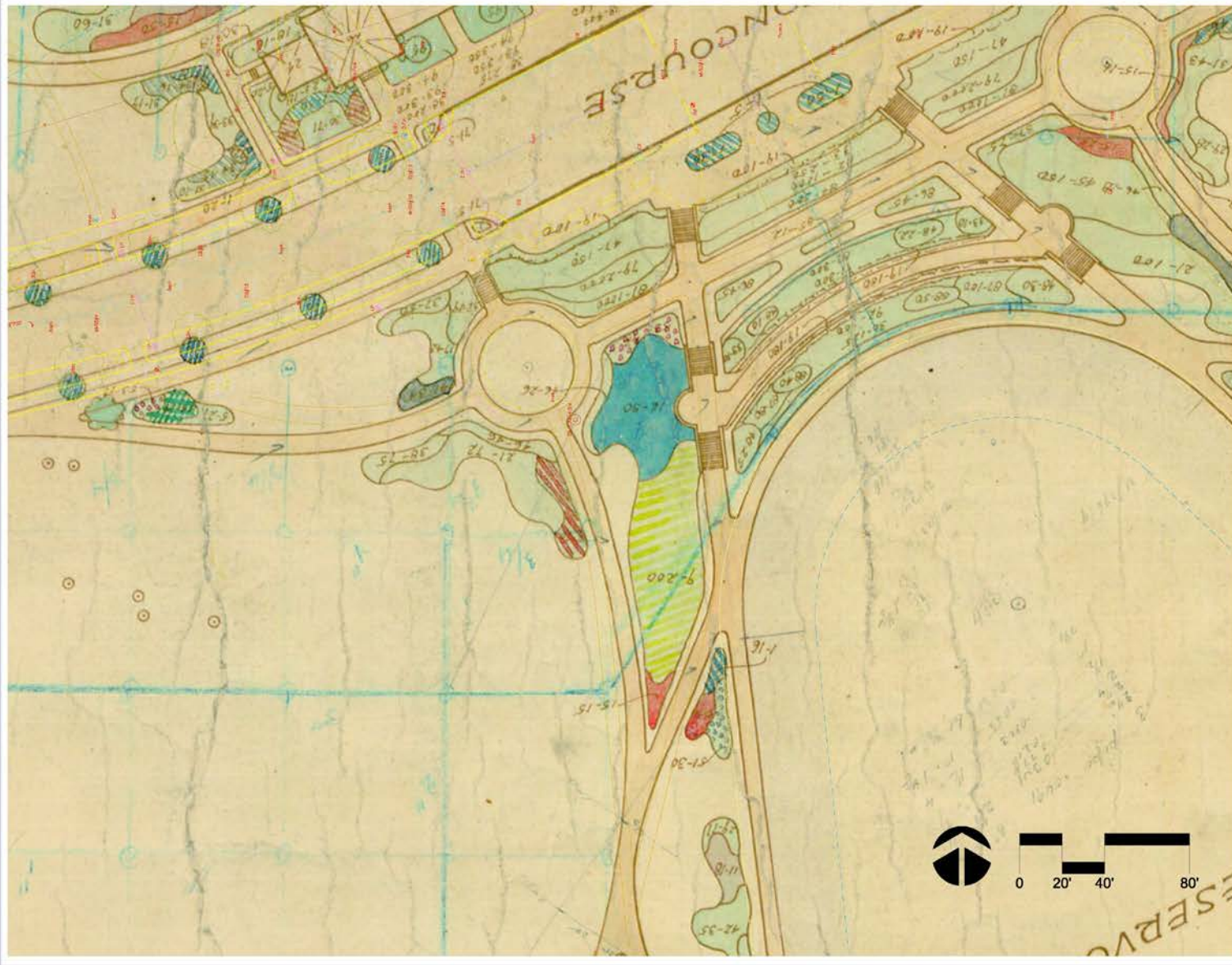
Volunteer Park, Seattle, W.A.



Volunteer Park, Seattle.







>>>>CAUTION - CALL 811<<<<
 UTILITY NOTIFICATION CENTER
 BEFORE YOU DIG!
 WWW.CALLBEFOREYODIG.ORG

NOT LESS THAN 2 OR MORE THAN 10 BUSINESS DAYS PRIOR TO COMMENCING EXCAVATION OR DEMOLITION, SECURE THE SERVICES OF A COMMERCIAL UNDERGROUND UTILITY LOCATOR SERVICE TO IDENTIFY BELOW-GROUND IMPROVEMENTS THAT MAY NOT BE INDICATED ON THE DRAWINGS. ADDITIONALLY, TO REQUEST PRIVATE UNDERGROUND UTILITY SYSTEMS LOCATED, CALL 800-INSPECTION REQUEST LINE @ 800-894-7004. REFER TO SECTIONS 02-100 & 02-105 OF THE SPECIFICATIONS FOR INSTRUCTIONS ON HOW TO PROCEED.

3		
2		
1		
NO.	REVISION -- AS BUILT	DATE

REVIEWED: _____ PARK ENGINEER _____ DATE _____
 ALL WORK DONE IN ACCORDANCE WITH THE CITY OF SEATTLE STANDARD PLANS AND SPECIFICATIONS TO EFFECT ON THE DATE SHOWN HEREIN, AND SUPPLEMENTED BY SPECIAL PROVISIONS.



Volunteer Park
Peach Grant

Existing Conditions

DESIGNER	DATE: August 2012
DRAWN	SHEET 1 OF 1
CHECKED	
ORDER NO.	
CONTRACT NO.	
SCALE	1"=20'-0"



PLANTING LIST
FOR
VOLUNTEER PARK, SEATTLE, WASHINGTON.

Olmsted Brothers,
Landscape Architects.

Brockline, Mass.,
18th February, 1910.

1. Berberis thunbergii, 943 plants, 2½' apart.
Japan Barberry.
2. Jasminum nudiflorum, 375 plants, 2½' apart.
Jasmine.
3. 7 beds, 335 plants, 3½' apart:
Ligustrum ibota, 100 plants,
Privet.
Viburnum dentatum, 135 plants,
Arrowwood.
Cornus paniculata, 100 plants,
Gray Dogwood.
4. 5 beds, 205 plants, 3' apart:
Philadelphus gordonianus, 100 plants,
Mock Orange.
Philadelphus "Mont Blanc" 105 plants,
Mock Orange.
5. Rosa rugosa, 201 plants, 2½' apart.
Ramanas Rose.
6. Cotoneaster bhmifolia, 38 plants, 2' apart.
Cotoneaster.
7. 1 bed, 61 plants, 3' apart:
Ilex aquifolium, 20 plants,
Holly.
Cornus Nuttali, 21 plants,
Dogwood.
- Cytis scoparius, 20 plants,
Broom.
8. Lonicera fuchsoides, 6 plants, 2' apart.
Honeysuckle.
9. Cytis scoparius, 342 plants, 3½' apart.
Broom.
10. 9 beds, 825 plants, 4' apart:
Ilex aquifolium, 300 plants,
Holly.
Prunus laurocerasus, 225 plants,
Laurel.
Cornus Nuttali, 300 plants,
Dogwood.

Credit: Courtesy of the National Park
Service, Frederick Law Olmsted National
Historic Site

Olmsted Planting List Collector
Job # 2695

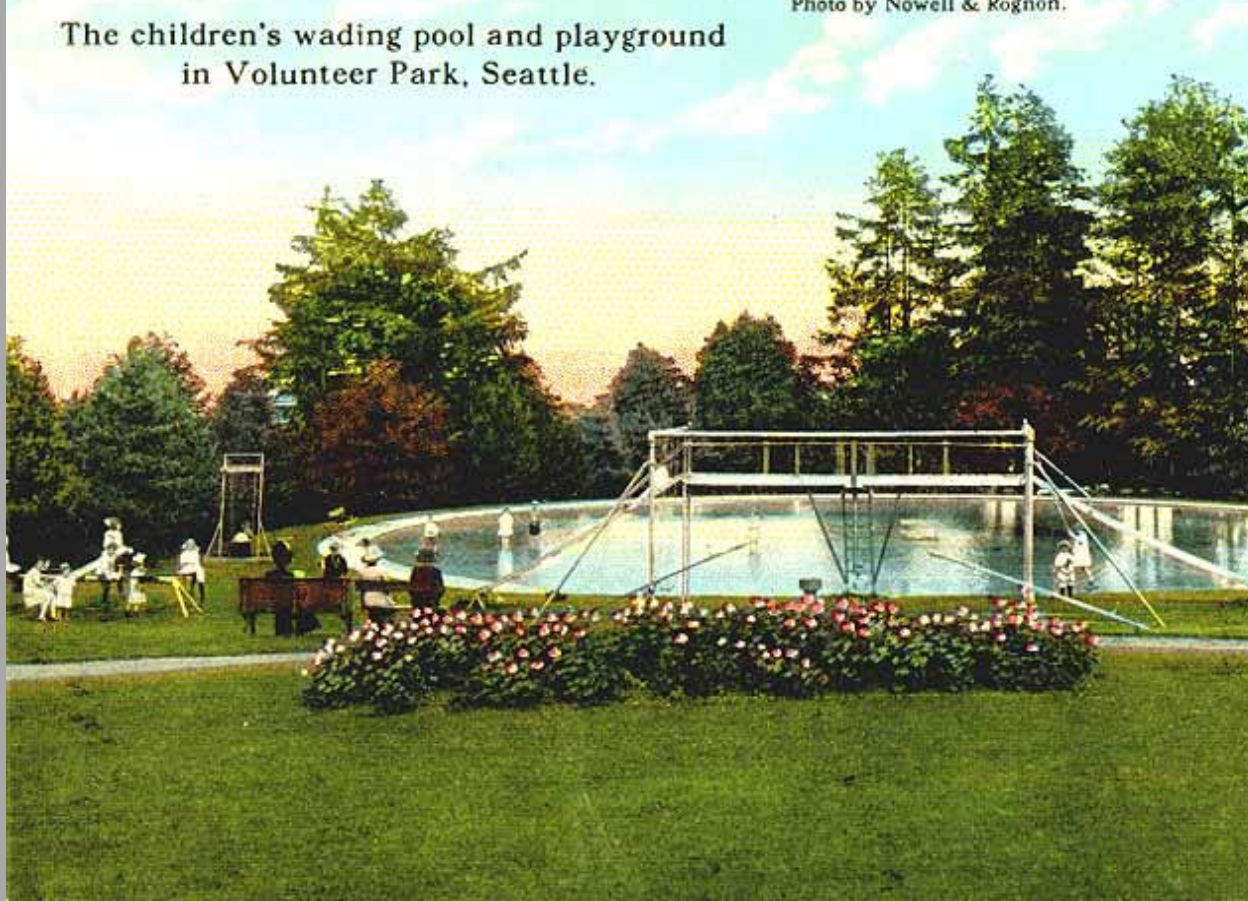






The children's wading pool and playground
in Volunteer Park, Seattle.

Photo by Nowell & Rognon.







ART MUSEUM VOLUNTEER PARK

P. A. S. INC.

* 1932





Landmark Nomination 2011

Reasons for Nominating Volunteer Park:

- Formal Design Significance
- Horticultural Gem
- Lidding or De-commissioning Reservoir
- Museum Expansion
- Decline of the Urban Forest

Founding of Volunteer Park Trust 2012



Volunteer Park Trust Model Compared to Others

- Central Park, New York: Exclusive Role
- Buffalo, NY Park System: Leadership Role
- Volunteer Park Trust: Supplemental Role to SPR

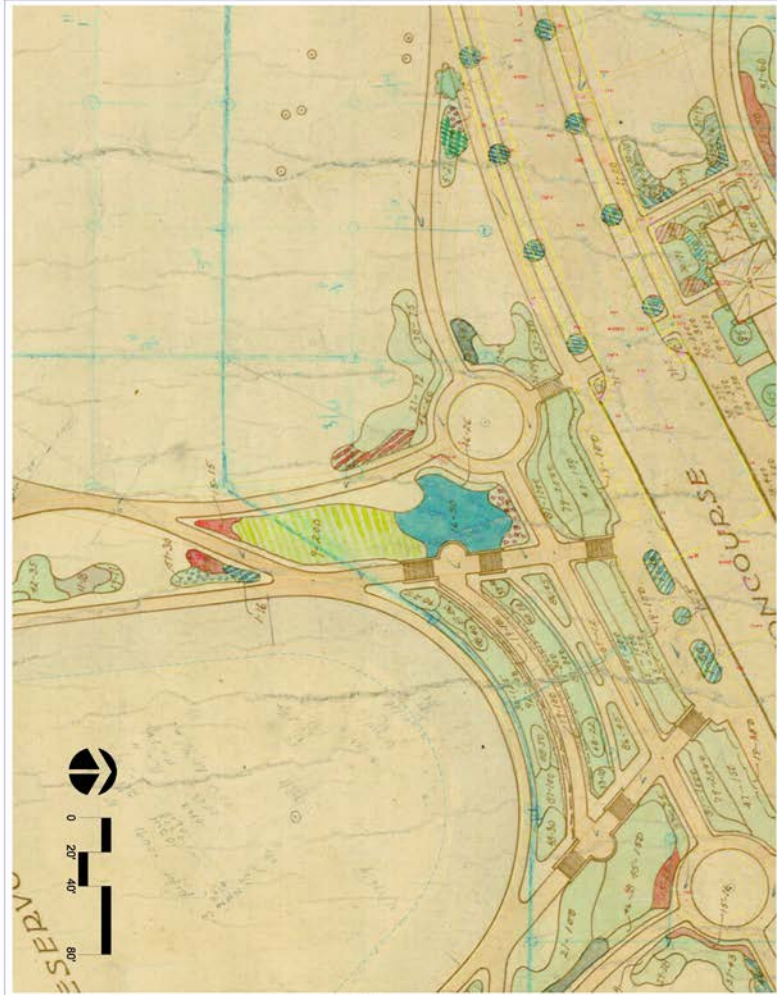
Achievements of the First Five-Year Plan 2012 - 2017

- Activation and Events
- Appearance and Community Involvement; Safety
- Planting Restoration in the Olmsted Manner
- Irrigation Assessment
- Amphitheater Feasibility Study
- Museum Expansion Charrettes and Participation
- Fund-raising









Plant List

Future Phase Small Trees, Tree Form Shrubs and Donations

Quantity	Size	Botanical Name	Common Name	Spacing
1	1 1/2" - 2"	Araucaria	Australian Blue Pine	N/A
1	1 1/2" - 2"	Adiantum	Blue Fern	N/A
1	1 1/2" - 2"	Conocarpus	Wax Palm	Donation
1	4" x 16"	Hemerocallis	Yellow Daylily	N/A
1	1	Hemerocallis sp.	Yellow Daylily	Donation

Note: Circles shown on plan are a graphic notation only. Refer to the plant labels and the plant list for the correct quantities.

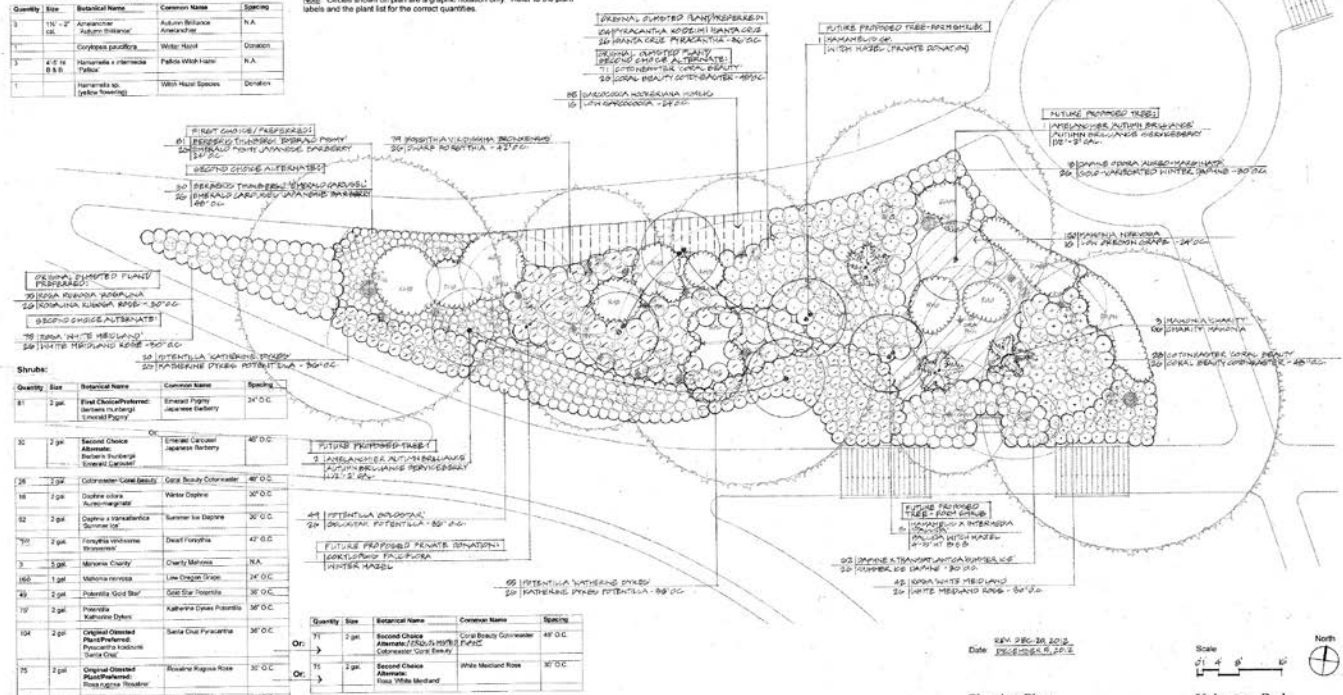
Future Phase Small Trees, Tree Form Shrubs and Donations

Quantity	Size	Botanical Name	Common Name	Spacing
1	1 1/2" - 2"	Araucaria	Australian Blue Pine	N/A
1	1 1/2" - 2"	Adiantum	Blue Fern	N/A
1	1 1/2" - 2"	Conocarpus	Wax Palm	Donation
1	4" x 16"	Hemerocallis	Yellow Daylily	N/A
1	1	Hemerocallis sp.	Yellow Daylily	Donation

Shrubs:

Quantity	Size	Botanical Name	Common Name	Spacing
81	2 gal	Emerald Green	Emerald Holly	24" O.C.
30	2 gal	Emerald Green	Emerald Holly	48" O.C.
36	2 gal	Emerald Green	Emerald Holly	48" O.C.
18	2 gal	Emerald Green	Emerald Holly	48" O.C.
62	2 gal	Emerald Green	Emerald Holly	24" O.C.
700	2 gal	Emerald Green	Emerald Holly	48" O.C.
3	5 gal	Emerald Green	Emerald Holly	N/A
160	1 gal	Emerald Green	Emerald Holly	24" O.C.
49	2 gal	Emerald Green	Emerald Holly	36" O.C.
70	2 gal	Emerald Green	Emerald Holly	36" O.C.
104	2 gal	Emerald Green	Emerald Holly	36" O.C.
75	2 gal	Emerald Green	Emerald Holly	36" O.C.
42	2 gal	Emerald Green	Emerald Holly	36" O.C.
85	1 gal	Emerald Green	Emerald Holly	36" O.C.

Brooks Kohr, LLC
 LANDSCAPE ARCHITECTURE
 100 East 7th Street
 Seattle, WA 98102
 (206) 324-8300 Fax 324-8300



REV. 08-28-2010
 DATE: 08/28/2010

Planting Plan
 Prepared for the Seattle
 Dept. of Parks and Recreation, by
 Friends of Seattle's Olmsted Parks
 And the Volunteer Park Trust

Scale
 0' 4' 8' 16'

Volunteer Park
Planting Area NW 1
 (Southwest of North Lily Pond)
 1400 East Prospect Street
 Seattle, Washington 98112

CAUTION - CALL 811
 UTILITY NOTIFICATION CENTER
 www.call811.com

Volunteer Park
 Patch Grant

Existing Conditions

DATE: 08/28/2010

SCALE: 1" = 40'

PROJECT: VOLUNTEER PARK PLANTING AREA NW 1

DESIGNED BY: BROOKS KOHR, LLC

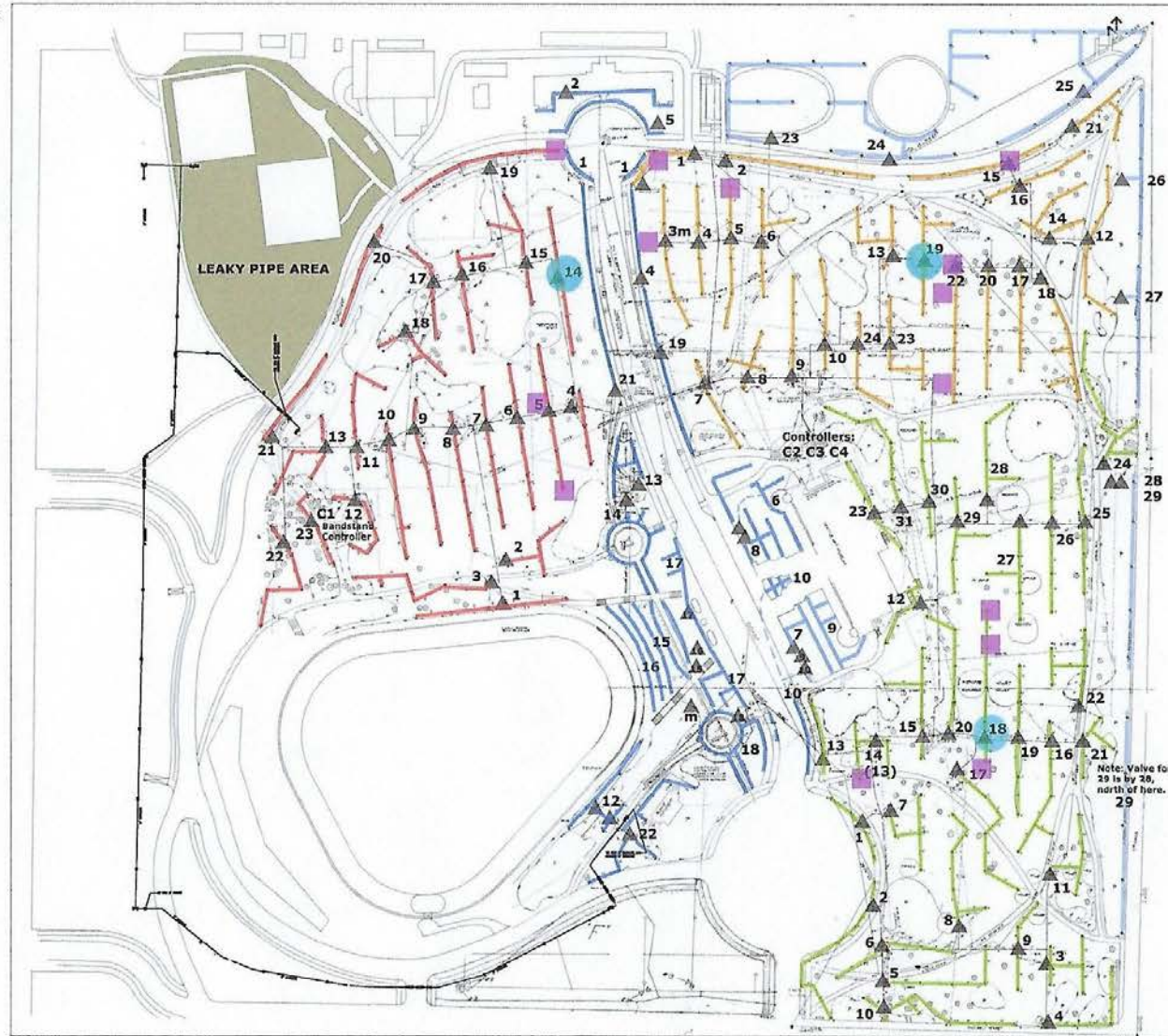
CHECKED BY: BROOKS KOHR, LLC

DATE: 08/28/2010

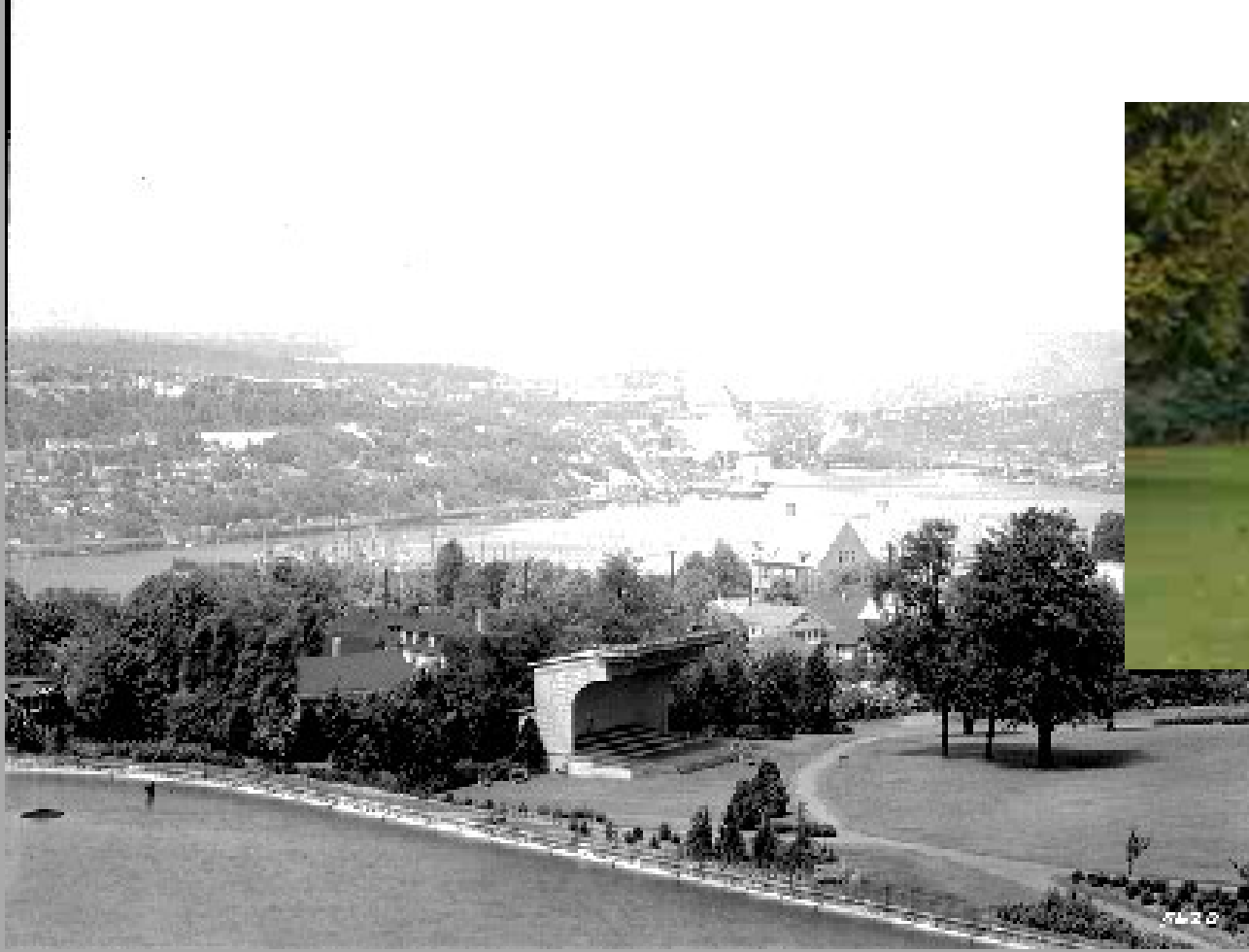




- RED = BANDSTAND CLOCK
- ORANGE = CLOCK 2
- BLUE = CLOCK 3
- GREEN = CLOCK 4
- C = ~CLOCK LOCATION
- m = MANUAL VALVE
- ▲ VALVE LOCATION
as close as possible
- VALVE LEAKS
- WET SPOTS



VOLUNTEER PARK KNOWN ISSUES





ENLARGED SITE PLAN - INVENTORY AND ANALYSIS

Refer to key considerations summary on previous page.

- LEGEND
- █ ASPHALT PATH
 - █ AGGREGATE PATH
 - █ CONCRETE SIDEWALK
 - █ ROADWAY CLOSED TO VEHICULAR TRAFFIC

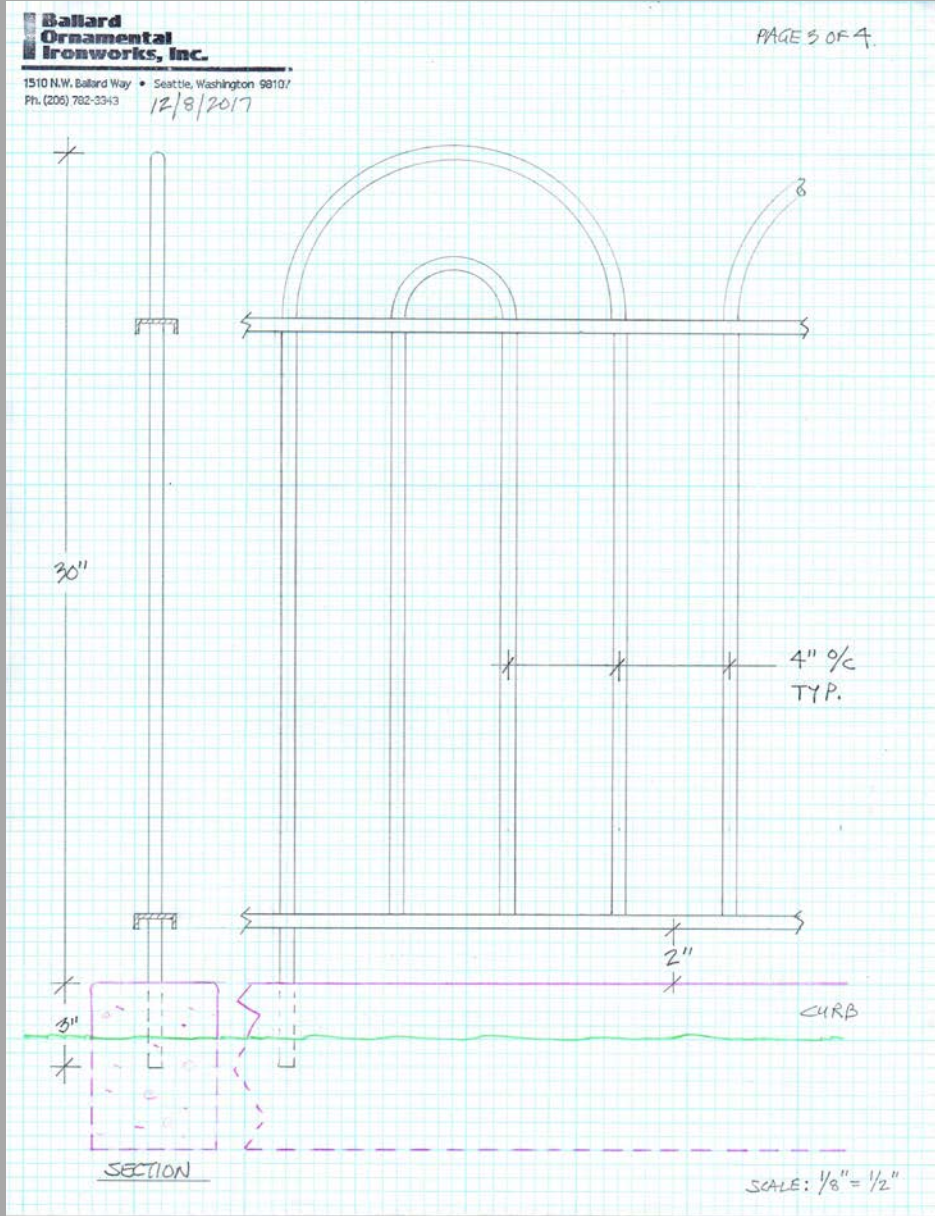






Goals for the Second Five-Year Plan, 2018 - 2023

- Continued activation and events
- Minor Capital Improvements, including Lily Pond Fences and Lighting Renovation
- Major Capital Improvement: Reservoir Re-design, including Sunset Promenade
- Major Capital Improvement: Amphitheater Implementation
- Major Capital Improvement: Irrigation Renovation
- Planting Restoration: Southwest and Southeast Entrances









Volunteer Park, Seattle, Wash.



*Preserving & Enhancing Seattle's
Historic Green Oasis*

CURRENT & PROPOSED PARK PROJECTS

- 1 SEATTLE ASIAN ART MUSEUM: A modern museum in an historic building
- 2 LILY POND FENCING: Safe, permanent metal rails
- 3 STREET LAMPS: Replacing 40 lamp globes, repainting 32 light poles
- 4 SUSTAINABILITY: Identifying opportunities in water and energy conservation
- 5 WATER TOWER: Restoring framed vistas, improving plantings
- 6 THE AMPHITHEATER: Reimagining for audiences and performers
- 7 RESERVOIR & SUNSET PROMENADE: Recapturing the 1910s experience

Learn more about the history of the park with the Volunteer Park mobile app: Search "Volunteer Park" in the iOS App Store or Google Play Store.

This historic map is the preliminary Volunteer Park plan that was designed by The Olmsted Brothers in 1906. The park has evolved to add the Seattle Asian Art Museum, the Amphitheater and various events. Many of the landmarks identified on this historic map are now gone or have been altered. Photo credit: Volunteer Park Trust.

The End

Questions?



