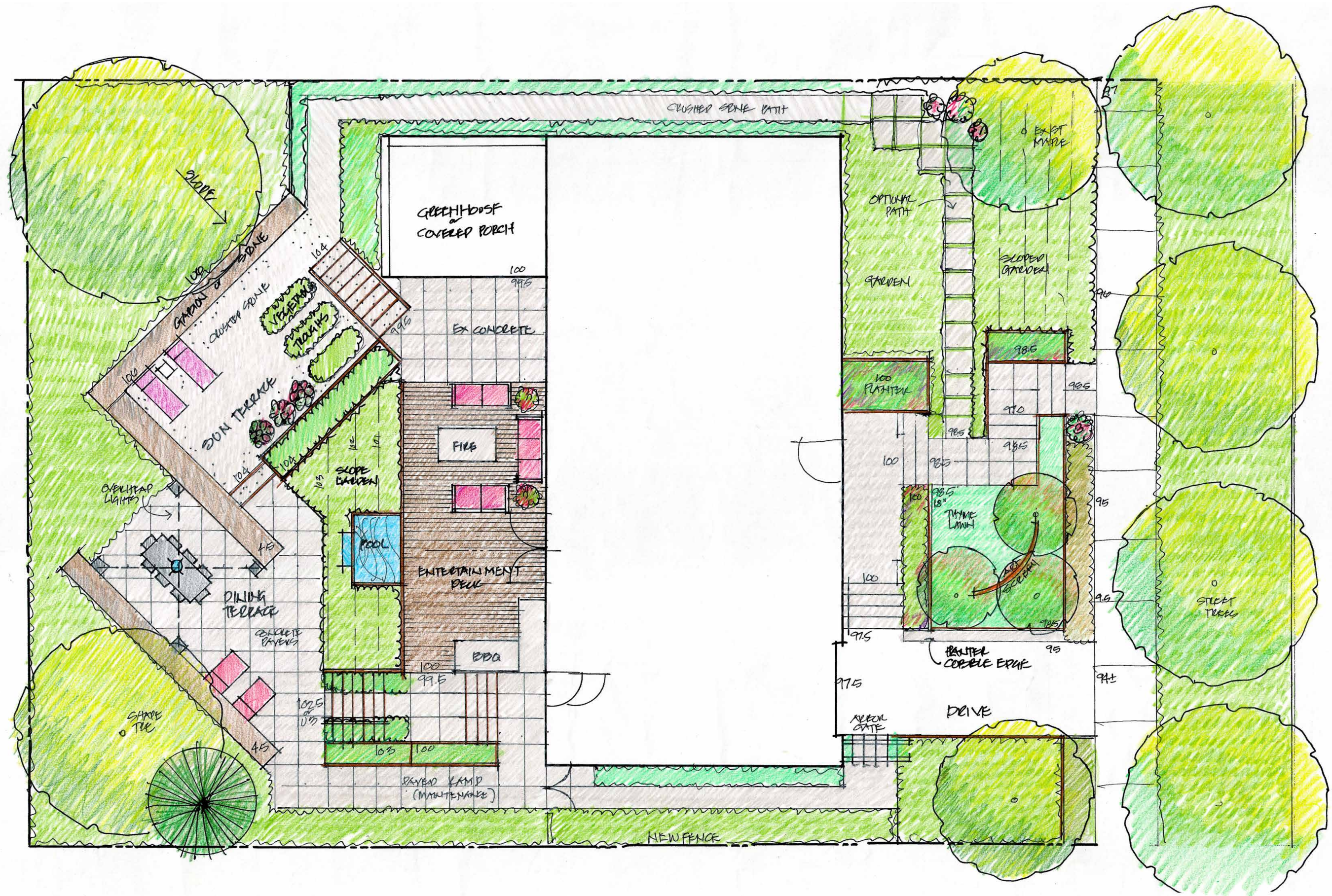




GILLIAN'S GARDEN

This small garden was designed for the owner of Ravenna Gardens, a much-loved urban garden shop. Gillian's Garden is a place of respite and a place for experimentation. The garden redesign introduces a contemporary aesthetic and industrial materials.



GILLIAN'S GARDEN CONCEPT

The gently sloping site was reorganized as a series of terraces tucked into plantings. The resulting garden feels spacious, lives large and supports the owner's lifestyle with places for sunning, growing food, entertaining, testing plants and gardening.



QUALITY OF DESIGN

The project utilizes simple interventions, attention to scale and details, use of recycled materials and thoughtful plantings. Plants climb up walls, arbors and fences greening the small space, adding privacy, framing views, and preserving a sense spaciousness.



QUALITY OF DESIGN

The terraces are delineated with simple materials: gabion retaining walls for stormwater management, steel arbor, hedges, and artful lighting.



QUALITY OF DESIGN

A variety of unique plants, artful features, planters, and salvaged garden artifacts add detail and interest. The garden is intimate yet lives large.



DESIGN EXECUTION

The entertainment terrace provides a sheltered outdoor dining room framed with a steel arbor. The space offers garden views with water features as focal points. Mature trees are retained creating the impression of an established garden.



DESIGN CONTEXT

The owner embraced a contemporary aesthetic, extending the front garden to the street, enhancing the neighborhood and welcoming visitors. The garden demonstrates how much can be accomplished in a small urban space.



ENVIRONMENTAL SENSITIVITY

Very few catalogue items are introduced, and many items are recycled. The result is a unique garden that truly expresses the owner's personality and supports her lifestyle.



SUSTAINABILITY

A recycled galvanized steel planter is used as a water feature. A variety of industrial and antique planters are filled with distinctive plants.



SUSTAINABILITY

Most of the space is permeable and accommodates infiltration of storm water. The materials are durable, partially recycled, and inexpensive, including crushed stone surfacing, steel, precast concrete pavers, and synthetic decking.



SUSTAINABILITY

This water wise garden does not include automatic irrigation. The owner monitors and hand waters when needed. Soils were improved and beds constructed to support healthy plants.



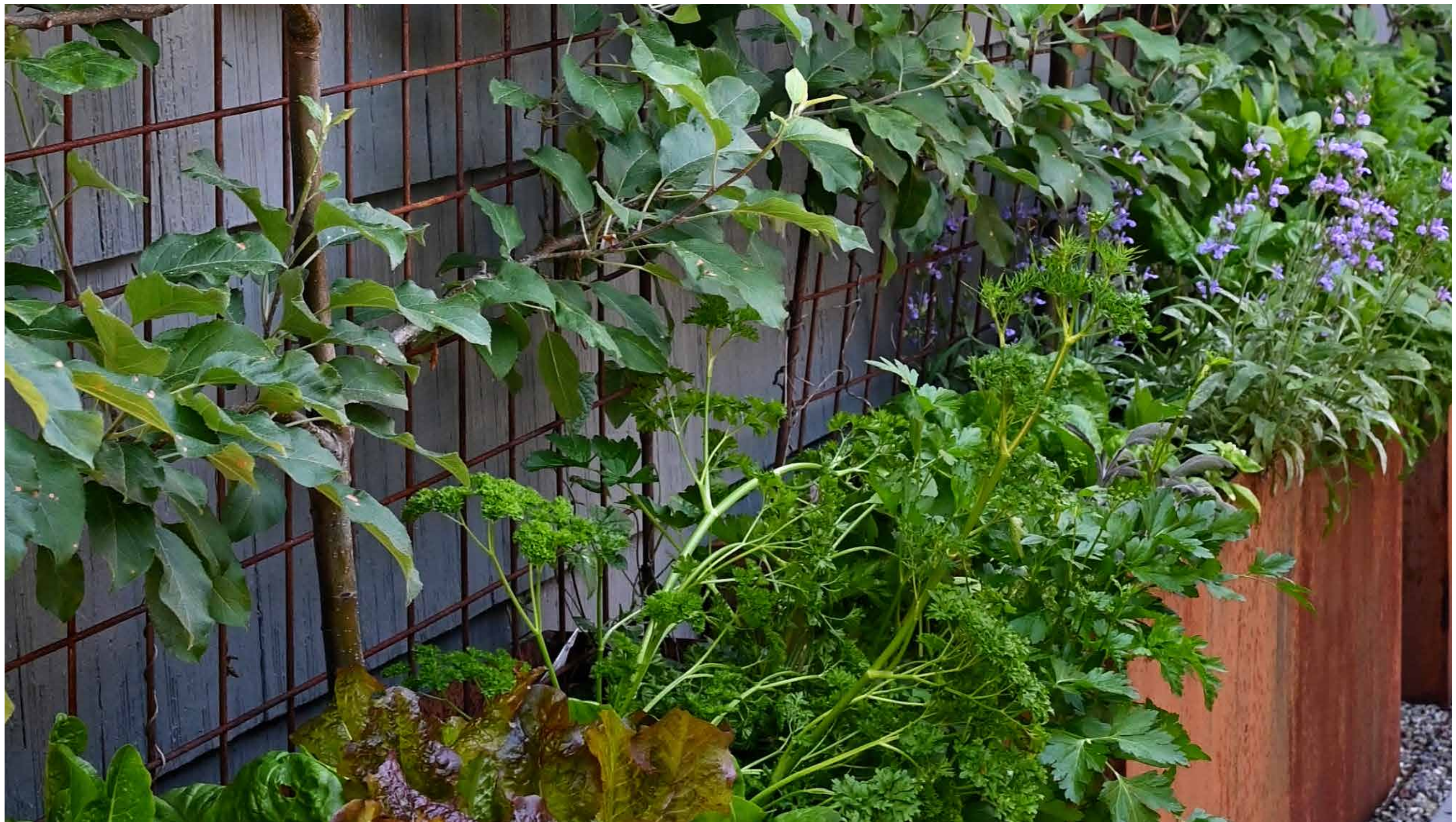
DESIGN VALUE

Planting beds are filled with a diverse collection of mostly drought tolerant plants. The owner loves plants and uses the garden to test new varieties and explore plants that will adapt to changing climate.



DESIGN VALUE

The sun terrace is a place to relax on lounge chairs surrounded by galvanized tubs filled with herbs, vegetables, and flowers.



DESIGN VALUE

The garden demonstrates how efficiently land can be used in an urban setting. One benefit of a small garden is the ability to introduce more diversity and test plants without a need to plant in masses.